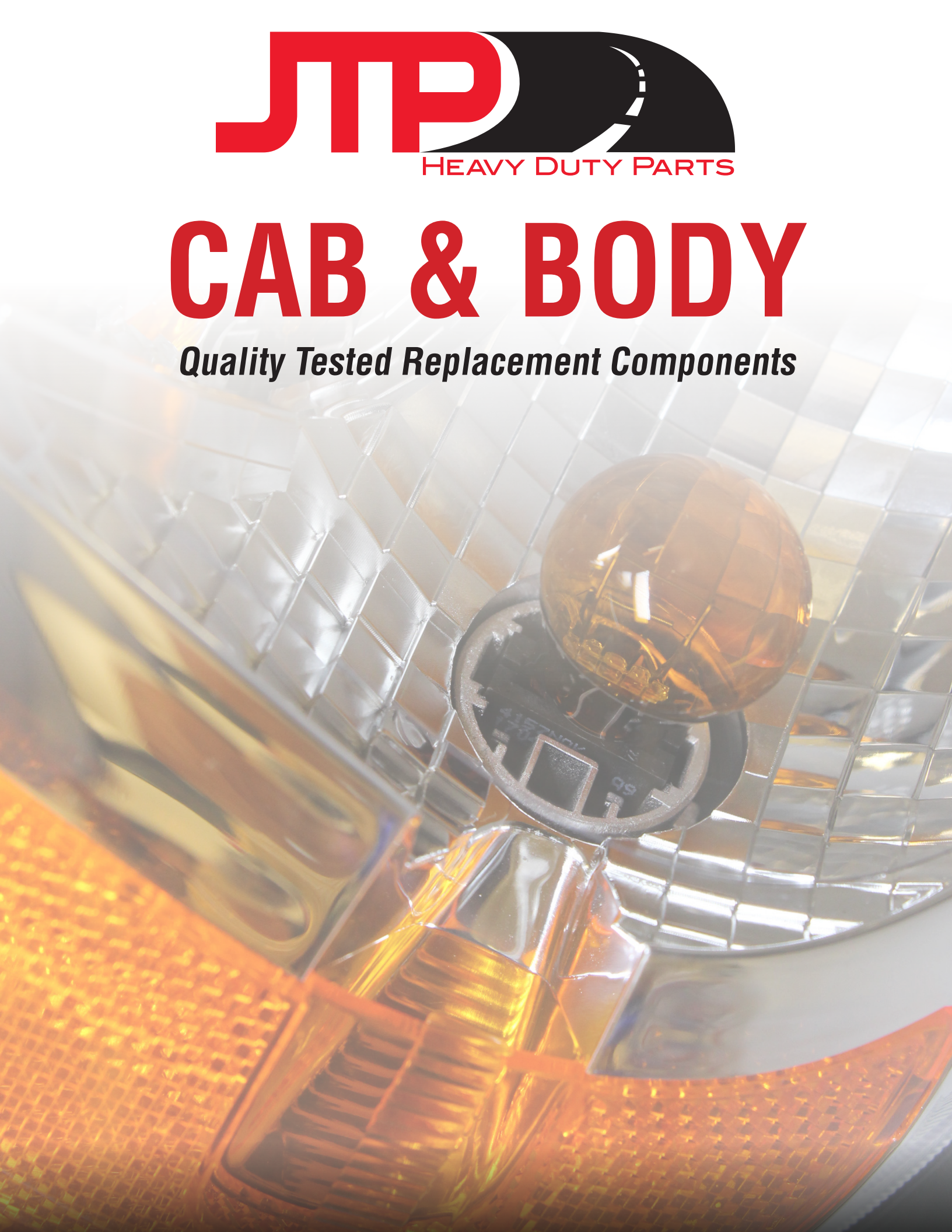
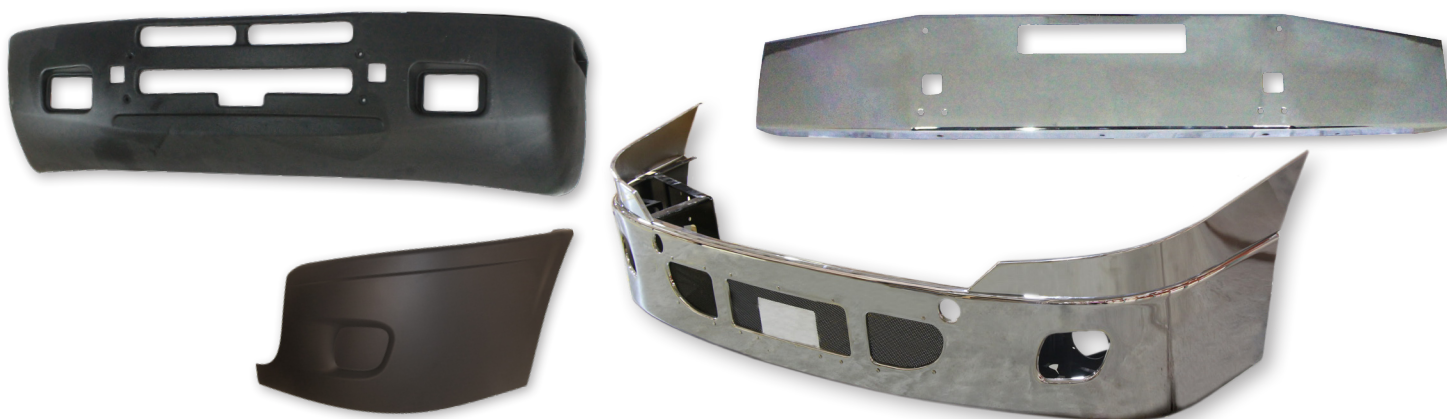




# CAB & BODY

*Quality Tested Replacement Components*





JTP #:	REPLACES #:	DESCRIPTION:	PRODUCT INFORMATION:	WORKS W/:
J18986	21-20112-000	Bumper End	Freightliner FLD Class White	J18985 J18987
J18985	21-20112-001	Bumper End	Freightliner FLD Class	J18986 J18987
J18890	2126517-000	Bumper End	Freightliner M2 Class White	
J19151	21-26021-006	Bumper End Cap, LH	Freightliner Columbia CL112 & CL120 Class	J19813 J19814 J19150 J20404 J20405 J20386
J19150	21-26021-007	Bumper End Cap, RH	Freightliner Columbia CL112 & CL120 Class White	J19813 J19814 J19151 J20404 J20405 J20386
J22994	21-27300-000	Bumper End Cover w/ Fog Lamp Hole, LH	Freightliner Cascadia Class (2008-2017) Grey	J22969 J22976 J22975
J22985	21-27300-002	Bumper End Cover w/o Fog Lamp Hole, LH	Freightliner Cascadia Class (2008-2017) Grey	J22984 J22996 J22972
J22984	21-27300-003	Bumper End Cover w/o Fog Lamp Hole, RH	Freightliner Cascadia Class (2008-2017) Grey	J22985 J22996 J22972
J22969	21-27300-001	Bumper End Cover w/ Fog Lamp Hole, RH	Freightliner Cascadia Class (2008-2017) Grey	J22994 J22976 J22975
J22996	Z21-28619-000	Bumper End Reinforcement w/o Fog Lamp Hole, LH	Freightliner Cascadia Class (2008-2014)	J22985 J22984 J22996
J22972	Z21-28619-001	Bumper End Reinforcement w/o Fog Lamp Hole, LH	Freightliner Cascadia Class (2008-2017)	J22985 J22984 J22996
J22976	Z21-28619-002	Bumper End Reinforcement w/ Fog Lamp Hole, LH	Freightliner Cascadia Class (2008 & Up)	J22994 J22969 J22975
J22975	Z21-28619-003	Bumper End Reinforcement w/ Fog Lamp Hole, RH	Freightliner Cascadia Class (2008-2017)	J22994 J22969 J22976
J24083	3559-058-C	Bumper End w/o Fog Lamp Hole, LH	International 8600 Series Heavy Duty	
J26104	82741344	Bumper End, LH	Volvo Aero sleeper Models w/ long hood (2015 & Up)	
J26105	82741340	Bumper End w/ Fog Lamp Hole, LH	Volvo Aero sleeper Models w/ long hood (2015 & Up)	
J22918	82721514	Bumper End w/o Fog Lamp Hole, LH	Volvo VNL Models	J22917 J22163 J22164
J22214	3720-617-C	Bumper End, LH	International ProStar Linehaul Conventionals International RH Series	J22213
J22916	82721510	Bumper End w/ Fog Lamp Hole, LH	Volvo VNL Models (2004 & Up)	J22915 J22163 J22164
J20350	2126517-000F	Bumper End, LH	Freightliner M2 Class White	J20349
J20154	21-26684-000	Bumper End, LH	Freightliner Century Class (2005 & Up)	J20155
J19813	21-26021-004	Bumper End, LH	Freightliner Columbia Class	J19814 J19151 J19150 J20404 J20405 J20386
J19814	21-26021-005	Bumper End, RH	Freightliner Columbia Class	J19813 J19151 J19150 J20404 J20405 J20386
J20155	21-26684-001	Bumper End, RH	Freightliner Century Class (2005 & Up)	J20154
J20349	2126517-001F	Bumper End, RH	Freightliner M2 Class White	J20350
J22915	82721512	Bumper End w/ Fog Lamp Hole, RH	Volvo VNL Models (2004 & Up)	J22916 J22163 J22164

All parts supplied are JOHN'S TRUCK PARTS. Use of other manufacturer's names, part numbers, or trademarks are solely used for informational/identification purposes.



# BUMPERS



JTP #:	REPLACES #:	DESCRIPTION:	PRODUCT INFORMATION:	WORKS W/:
J22213	3720-618-C	Bumper End, RH	International ProStar Linehaul Conventionals International RH Series	J22214
J22917	82721516	Bumper End w/o Fog Lamp Hole, RH	Volvo VNL Models	J22918 J22163 J22164
J26103	82741346	Bumper End w/o Fog Lamp Hole, RH	Volvo Aero sleeper Models w/ long hood (2015 & Up)	
J24082	3559-059-C	Bumper End, RH	International 8600 Series Heavy Duty	
J26106	82741342	Bumper End w/ Fog Lamp Hole, RH	Volvo Aero sleeper Models w/ long hood (2015 & Up)	
J19233	A680881-0001	Bumper Extension, LH	Freightliner FLD60, FLD70 & FLD80 Class	J19234
J19234	A680881-0101	Bumper Extension, RH	Freightliner FLD60, FLD70 & FLD80 Class	J19233
J24071	J24071	Bumper Guard	Kenworth T800 Models 14 Gauge; Polished Stainless Steel Heavy Duty 3 Tube; Easy Installation No Modification Needed; Folds Down For Hood Access Installation kit sold separately	
J24070	J24070	Bumper Guard	Universal Applications Pair w/ Installation Kit for Specific Application 14 Gauge; Polished Stainless Steel Heavy Duty 3 Tube; Easy Installation No Modification Needed; Folds Down For Hood Access Installation kit sold separately	
J25476	J25476	Bumper Guard	Black Powder Coat Heavy Duty 3 Tube Easy Installation No Modification Needed Folds Down For Hood Access Installation kit sold separately	
J24080	J24080	Bumper Guard Installation Kit	Peterbilt 388 & 389 Models (2007 & Up)	J24070
J24079	J24079	Bumper Guard Installation Kit	Peterbilt 379 Model (1987 & Up)	J24070
J24078	J24078	Bumper Guard Installation Kit	Kenworth T600 Model	J24070
J24077	J24077	Bumper Guard Installation Kit	Freightliner Columbia Class	J24070
J24076	J24076	Bumper Guard Installation Kit	Kenworth T800 Models	J24070
J24075	J24075	Bumper Guard Installation Kit	Freightliner Cascadia Class	J24070
J24074	J24074	Bumper Guard Installation Kit	Kenworth T660 Models	J24070
J24073	J24073	Bumper Guard Installation Kit	Volvo VNL Models	J24070
J24072	J24072	Bumper Guard Installation Kit	Kenworth T680, T700, T440 & T800 (2005 & Up) Models Peterbilt 384, 386 (2007 & Up) , 579 (2012 & Up) & 587 (2011 & Up) Series	J24070
J22415	N11-1187	Bracket, Bumper	Kenworth T660 Models	OEM Bumper
J19005	7520964-3	Bumper	Military M35, M54 & M809 Series Brake & Clutch Pedal Pad Bumper	
J22165	85104912	Bumper Cover, Center	Volvo VNL Series (2003 & Up)	J22163 J22164 J18208
J22163	20576039	Bumper Cover, LH	Volvo VNL Series (2003 & Up)	J11917 J22916 J22915 J22918 J22164 J22165 J18208
J22164	20576040	Bumper Cover, RH	Volvo VNL Series (2003 & Up)	J11917 J22916 J22915 J22918 J22163 J22165 J18208
J20404	A22-54198-000	Bumper Support Bracket, LH	Freightliner Columbia C112 & C120 Class	J19813 J19814 J19151 J19150 J20405 J20386
J20405	A22-54198-001	Bumper Support Bracket, RH	Freightliner Columbia C112 & C120 Class	J19813 J19814 J19151 J19150 J20404 J20386
J23258	3610-930-C	Bumper, Front	International 4200-4300 Series Medium Duty (2004 & Up) International 8600 Linehaul Conventionals (2004 & Up) 1 Piece; Large Tow Hook Holes; Painted Silver	

All parts supplied are JOHN'S TRUCK PARTS. Use of other manufacturer's names, part numbers, or trademarks are solely used for informational/identification purposes.

JTP #:	REPLACES #:	DESCRIPTION:	APPLICATION:
JEP0011-15	EP0011-15	Bumper	International 9100, 9200 & 9400 (1997 & Up) 14 Set Back Axle 10 Ga. Steel Chrome w/ Bolt Holes, Tow Hole, Vent Hole
JFE-0010-51	FE-0010-51	Bumper	Kenworth W900B & W900L Models 20 Boxed End Square 7 Ga. Steel w/ Tow Holes
JCB-0110-51	CB-0110-51	Bumper	Freightliner COE & Conventional Classic Class (1984-1999) 20 Boxed End Square 7 Ga. Steel Chrome w/ Step/ Tow Hole
JER-0010-06	ER-0010-06	Bumper	International 9900IX Series 18 Rolled End Square 7 Ga. Steel Chrome w/ Step Hole w/ Tow Holes
JCZ-1001-707	CZ-1001-707	Bumper w/ Fog Lamp Holes	Freightliner Cascadia Class (2002-2009) 17 Gullwing 7 Ga. Steel Chrome w/ Vent Hole
JCY-0001-15X	CY-0001-15X	Bumper	Freightliner Cascadia Class (2008-2011) 14 SBA 10 Gauge Chrome Steel w/ Vent Hole
JHA-0000-06	HA-0000-06	Bumper	Peterbilt 359 Series 18 Rolled End Square 7 Gauge Steel Chrome Bolt Holes
JCB0110-06-R15	CB0110-06-R15	Bumper	Freightliner COE & Conventional Classic Class (1984-1999) 20 Boxed End Square 7 Ga Steel Chrome w/ Step & Tow Pin Hole w/ 15 Round 2
JEU-0011-16X	EU-0011-16X	Bumper	International Prostar Series (2008 & Up) 16 SBA 10 Ga. Steel Chrome w/ Tow Holes w/ Vent Holes
JEU-5011-16X	EU-5011-16X	Bumper	International Prostar Series (2008 & Up) 16 SBA 10 Ga. Steel Chrome w/ Factory Fog Lamp Holes w/ Tow Holes w/ Vent Holes
JHV-0090-02	HV-0090-02	Bumper	Peterbilt 365, 388 & 389 Series 16 Tapered End 7 Ga. Steel Chrome Bolt Holes, Bolt On Center Tow Pin Mount Holes
JHV-0090-06	HV-0090-06	Bumper	Peterbilt 365, 388 & 389 Series 18 Texas Square 7 Ga. Steel Chrome Bolt Holes, Bolt On Center Tow Pin Mount Holes
JCB-0010-01	CB-0010-01	Bumper	Freightliner Classic Class (1984-1999) 12 Tapered 7 Ga. Steel Chrome Bolt Holes Tow Pin Hole
JFE0010-11	FE0010-11	Bumper	Kenworth W900B & W900L Models 18 Box End Square 7 Ga. Steel Chrome w/ Bolt Holes Tow Pin Holes
JBF-0010-29	BF-0010-29	Bumper	Ford Aeromax L, LS, LA, LTS, LTA & 9000 Models 9 Sba 10 Ga. Steel Chrome w/ Hitch Holes
JCOH5011-16X	COH5011-16X	Bumper	Freightliner Cascadia Class (2012 & Up) 16 Set Back Axle 10 Ga. Steel Chrome Bolt Holes, Lamp Holes, Tow Pin Holes, Vent Holes, Extensions Included
JCV-0100-06	CV-0100-06	Bumper	Freightliner Classic XL Class (2004-2007) 18 Rolled End Square 7 Ga. Steel Chrome w/ Step Hole
JER0010-06R15	ER0010-06R15	Bumper	International 9900 Series (2000 & Up) 18 Texas Square 7 Ga. Steel Chrome Bolt Holes, Tow Pin Holes w/ 15 2 Round Lamp Holes
JFE-0210-11	FE-0210-11	Bumper	Kenworth W900B & W900L Models 18 Boxed End Square 7 Ga. Steel w/ Step Hole w/ Tow Holes
JHC0010-06009	HC0010-06009	Bumper	Peterbilt 379 Series 18 Rolled End Square 10 Ga. Steel Chrome Bolt Holes Tow Pin Hole Lamp Duty No Tire Guards
JHC0010-06R15	HC0010-06R15	Bumper	Peterbilt 379 Series 18 Rolled End Square 10 Ga. Steel Chrome Bolt Holes Tow Pin Hole Lamp Duty No Tire Guards
JCB-0010-02	CB-0010-02	Bumper w/o Fog Lamp Holes	Freightliner COE & CONV Class (1984 & Up) 16 Tapered Hitch: Tow Hitch Holes
JCB-0010-06	CB-0010-06	Bumper w/o Fog Lamp Holes	Freightliner COE & CONV Class (1984 & Up) 18 Texas Square Hitch: Tow Hitch Holes
JCI-0001-15	CI-0001-15	Bumper w/o Fog Lamp Holes	Freightliner CONV, SBFA, FLD112 & FLD120 Class (1989 & up) 13 Set Back Vented

All parts supplied are JOHN'S TRUCK PARTS. Use of other manufacturer's names, part numbers, or trademarks are solely used for informational/identification purposes.



# BUMPERS



JTP #:	REPLACES #:	DESCRIPTION:	APPLICATION:
JCI-0011-15	CI-0011-15	Bumper w/o Fog Lamp Holes	Freightliner CONV, SBFA, FLD112 & FLD120 Class (1989 & up) 13 Set Back Hitch: Tow/Hitch Holes Vented
JCI-2001-15	CI-2001-15	Bumper	Freightliner CONV, SBFA, FLD112 & FLD120 Class (1989 & up) 13 Set Back 2 Square Lamps, Vented
JCI-2011-15	CI-2011-15	Bumper	Freightliner CONV, SBFA, FLD112 & FLD120 Class (1989 & up) 13 Set Back 2 Square Lamps, Vented Hitch: Tow/Hitch Holes
JCL-0210-15	CL-0210-15	Bumper w/o Fog Lamp Holes	Freightliner Century SBFA Class (1996-2004) 13 Set Back Steps: Center Step Hole Hitch: Tow/Hitch Holes
JCL-0210-16	CL-0210-16	Bumper w/o Fog Lamp Holes	Freightliner Century SBFA Class (1996-2004) 16 Set Back Steps: Center Step Hole Hitch: Tow/Hitch Holes
JCL-0210-17	CL-0210-17	Bumper w/o Fog Lamp Holes	Freightliner Century SBFA Class (1996-2004) 18 Set Back Steps: Center Step Hole Hitch: Tow/Hitch Holes
JCL-2210-15	CL-2210-15	Bumper	Freightliner Century SBFA Class (1996-2004) 13 Set Back, 2 Square Lamps Steps: Center Step Hole Hitch: Tow/Hitch Holes
JCOA-0011-17	COA-0011-17	Bumper w/o Fog Lamp Holes	Freightliner Columbia Class (2008 & Up) 18 Set Back Hitch: Tow/Hitch Holes Vented
JCOA-1011-17	COA-1011-17	Bumper	Freightliner Columbia Class (2008 & Up) 18 Set Back 2 Round Lamps, Vented Hitch: Tow/Hitch Holes
JCOB-0011-17	COB-0011-17	Bumper w/o Fog Lamp Holes	Freightliner Century Class (2008 & Up) 18 Set Back Hitch: Tow/Hitch Holes Vented
JCOB-1011-17	COB-1011-17	Bumper	Freightliner Century Class (2008 & Up) 18 Set Back 2 Round Lamps, Vented Hitch: Tow/Hitch Holes
JCOC-0100-06	COC-0100-06	Bumper w/o Fog Lamp Holes	Freightliner Coronado Class (2010 & Up) 18 Texas Square Steps: Standard Step Hole
JCOF-0011-15	COF-0011-15	Bumper w/o Fog Lamp Holes	Freightliner Business Class & M2 112 Class (2004-2012) 13 Set Back Hitch: Tow/Hitch Holes Vented
JCOH-0011-15X	COH-0011-15X	Bumper w/o Fog Lamp Holes	Freightliner Cascadia Class (2012 & Up) 14 Set Back w/ Extensions Hitch: Tow/Hitch Holes Vented
JCT-0001-15	CT-0001-15	Bumper w/o Fog Lamp Holes	Freightliner Business & M2 106 Class (2003 & Up) 13 Set Back Vented

All parts supplied are JOHN'S TRUCK PARTS. Use of other manufacturer's names, part numbers, or trademarks are solely used for informational/identification purposes.

JTP #:	REPLACES #:	DESCRIPTION:	APPLICATION:
JCV-0010-06	CV-0010-06	Bumper w/o Fog Lamp Holes	Freightliner Classic XL Class (2004-2007) 18 Texas Square Hitch: Tow/Hitch Holes
JCV-0110-02	CV-0110-02	Bumper w/o Fog Lamp Holes	Freightliner Classic XL Class (2004-2007) 16 Tapered Steps: Standard Step Hole Hitch: Tow/Hitch Holes
JCV-0110-06	CV-0110-06	Bumper w/o Fog Lamp Holes	Freightliner Classic XL Class (2004-2007) 18 Texas Square Steps: Standard Step Hole Hitch: Tow/Hitch Holes
JCW-0011-15	CW-0011-15	Bumper w/o Fog Lamp Holes	Freightliner Century SBFA & Columbia Class (2004 & Up) 13 Set Back, Vented Hitch: Tow/Hitch Holes
JCW-0011-16	CW-0011-16	Bumper w/o Fog Lamp Holes	Freightliner Century SBFA & Columbia Class (2004 & Up) 16 Set Back, Vented Hitch: Tow/Hitch Holes
JCW-2011-15	CW-2011-15	Bumper	Freightliner Century Class (2005) Freightliner SBFA & Columbia Class (2004 & Up) 13 Set Back, 2 Square Lamps, Vented Hitch: Tow/Hitch Holes
JCY-0011-15X	CY-0011-15X	Bumper w/o Fog Lamp Holes	Freightliner Cascadia Class (2008-2013) 14 Set Back w/ Extensions, Vented Hitch: Tow/Hitch Holes
JCY-0011-16X	CY-0011-16X	Bumper w/o Fog Lamp Holes	Freightliner Cascadia Class (2008-2013) 16 Set Back w/ Extensions, Vented Hitch: Tow/Hitch Holes
JCY-5011-15X	CY-5011-15X	Bumper	Freightliner Cascadia Class (2008-2013) 14 Set Back w/ Extensions, 2 OEM Fog Lamps, Vented Hitch: Tow/Hitch Holes
JCY-5011-16X	CY-5011-16X	Bumper	Freightliner Cascadia Class (2008-2013) 16 Set Back w/ Extensions, 2 OEM Fog Lamp Holes, Vented Hitch: Tow/Hitch Holes
JCZ-0001-707	CZ-0001-707	Bumper w/o Fog Lamp Holes	Freightliner Coronado Class (2002-2009) 17 Gullwing, Vented
JER-0210-02	ER-0210-02	Bumper w/o Fog Lamp Holes	International 9900i Conventionals (2000 & Up) 16 Tapered Steps: Center Step Hole Hitch: Tow/Hitch Holes
JER-0210-06	ER-0210-06	Bumper w/o Fog Lamp Holes	International 9900i Conventionals (2000 & Up) 18 Texas Square Steps: Center Step Hole Hitch: Tow/Hitch Holes
JER-2210-02	ER-2210-02	Bumper	International 9900i Conventionals (2000 & Up) 16 Tapered, 2 Square Lamps Steps: Center Step Hole Hitch: Tow/Hitch Holes
JER-2210-06	ER-2210-06	Bumper	International 9900i Conventionals (2000 & Up) 18 Texas Square, 2 Square Lamps Steps: Center Step Hole Hitch: Tow/Hitch Holes
JFE-0010-02	FE-0010-02	Bumper w/o Fog Lamp Holes	Kenworth W900L & W900B Conventionals (1982 & Up) 16 Tapered Hitch: Tow/Hitch Holes
JFE-0010-06	FE-0010-06	Bumper w/o Fog Lamp Holes	Kenworth W900L & W900B Conventionals (1982 & Up) 18 Texas Square Hitch: Tow/Hitch Holes

All parts supplied are JOHN'S TRUCK PARTS. Use of other manufacturer's names, part numbers, or trademarks are solely used for informational/identification purposes.

# BUMPERS



JTP #:	REPLACES #:	DESCRIPTION:	APPLICATION:
JFE-0210-02	FE-0210-02	Bumper w/o Fog Lamp Holes	Multiple Kenworth Applications 16 Tapered Steps: Center Step Hole Hitch: Tow/Hitch Holes
JFE-0210-06	FE-0210-06	Bumper w/o Fog Lamp Holes	Multiple Kenworth Applications 18 Texas Square Steps: Center Step Hole Hitch: Tow/Hitch Holes
JFE-2210-02	FE-2210-02	Bumper	Multiple Kenworth Applications 16 Tapered, 2 Square Lamps Steps: Center Step Hole Hitch: Tow/Hitch Holes
JFE-2210-06	FE-2210-06	Bumper	Multiple Kenworth Applications 18 Texas Square, 2 Square Lamps Steps: Center Step Hole Hitch: Tow/Hitch Holes
JFG-0091-25	FG-0091-25	Bumper w/o Fog Lamp Holes	Kenworth T800 Models (1986-2003) 14 Open, Vented Hitch: External Bolt-On Tow Hitch
JFG-0101-25	FG-0101-25	Bumper w/o Fog Lamp Holes	Kenworth T800 Models (1986-2003) 14 Open, Vented Steps: Standard Step Hole
JFG-0101-26	FG-0101-26	Bumper w/o Fog Lamp Holes	Kenworth T800 Models (1986-2003)
JFG-2101-25	FG-2101-25	Bumper	Kenworth T800 Models (1986-2003) 14 Open End, 2 Square Lamps, Vented Steps: Standard Step Hole
JFG-2101-26	FG-2101-26	Bumper	Kenworth T800 Models (1986-2003) 14 Open End (Set Back On T800) 2 Square Lamps, Vented Steps: Standard Step Hole
JFG-2190-25	FG-2190-25	Bumper	Kenworth T800 Models (1986-2003) 14 Open End, 2 Square Lamps Steps: Standard Step Hole Hitch: External Bolt-On Tow Hitch
JFG-2190-26	FG-2190-26	Bumper	Kenworth T800 Models (1986-2003) 14 Open End (Set Back On T800), 2 Square Lamps Steps: Standard Step Hole Hitch: External Bolt-On Tow Hitch
JFH-0011-15	FH-0011-15	Bumper w/o Fog Lamp Holes	Kenworth T600 Models (1987 & Up)
JFH-0011-16	FH-0011-16	Bumper w/o Fog Lamp Holes	Kenworth T600 Models (1987 & Up) 16 Set Back, Vented Hitch: Tow/Hitch Holes
JFH-2011-15	FH-2011-15	Bumper	Kenworth T600 Models (1987 & Up) 13 Set Back, 2 Square Lamps, Vented Hitch: Tow/Hitch Holes
JFH-2011-16	FH-2011-16	Bumper	Kenworth T600 Models (1987 & Up) 16 Set Back, 2 Square Lamps, Vented Hitch: Tow/Hitch Holes
JFL-0010-18	FL-0010-18	Bumper w/o Fog Lamp Holes	Kenworth T300 Models 13 Forward Hitch: Tow/Hitch Holes
JFN-0101-25	FN-0101-25	Bumper w/o Fog Lamp Holes	Kenworth T800B Models (2004 & Up) 14 Open, Vented Steps: Standard Step Hole
JFN-0111-25	FN-0111-25	Bumper w/o Fog Lamp Holes	Kenworth T800B Models (2004 & Up) 14 Open, Vented Steps: Standard Step Hole Hitch: Tow/Hitch Holes

All parts supplied are JOHN'S TRUCK PARTS. Use of other manufacturer's names, part numbers, or trademarks are solely used for informational/identification purposes.



JTP #:	REPLACES #:	DESCRIPTION:	APPLICATION:
JFN-0111-26	FN-0111-26	Bumper w/o Fog Lamp Holes	Kenworth T800B Models (2004 & Up) 14 Open End (Set Back On T800) Steps: Standard Step Hole Hitch: Tow/Hitch Holes Vented
JFN-2101-25	FN-2101-25	Bumper	Kenworth T800B Models (2004 & Up) 14 Open End, 2 Square Lamps, Vented Steps: Standard Step Hole
JFN-2101-26	FN-2101-26	Bumper	Kenworth T800B Models (2004 & Up) 14 Open End (Set Back On T800), 2 Square Lamps, Vented Steps: Standard Step Hole
JFR-0011-15	FR-0011-15	Bumper w/o Fog Lamp Holes	Kenworth T660 Models 13 Set Back, Vented Hitch: Tow/Hitch Holes
JFR-0011-16	FR-0011-16	Bumper w/o Fog Lamp Holes	Kenworth T660 Models 16 Set Back, Vented Hitch: Tow/Hitch Holes
JFR-5010-16	FR-5010-16	Bumper	Kenworth T660 Models 16 Set Back, 2 OEM Fog Lamps Hitch: Tow/Hitch Holes
JFJ0010-16	FJ0010-16	Bumper w/o Fog Lamp Holes	Kenworth T270 & T370 SBFA Models 16 Set Back Hitch: Tow/Hitch Holes
JFV-0010-708	FV-0010-708	Bumper w/o Fog Lamp Holes	Kenworth T680 Set Back Axle Models 16 Set Back Axle (Gullwing) Hitch: Tow/Hitch Holes
JHC-0010-02	HC-0010-02	Bumper w/o Fog Lamp Holes	Peterbilt 378 & 379 Conventionals (1987 & Up) 16 Tapered Hitch: Tow/Hitch Holes
JHC-0010-06	HC-0010-06	Bumper w/o Fog Lamp Holes	Peterbilt 378 & 379 Conventionals (1987 & Up) 18 Texas Hitch: Tow/Hitch Holes
JHC-0010-11	HC-0010-11	Bumper w/o Fog Lamp Holes	Peterbilt 378 & 379 Conventionals (1987 & Up) 18 Boxed Hitch: Tow/Hitch Holes
JHC-0010-41	HC-0010-41	Bumper w/o Fog Lamp Holes	Peterbilt 378 & 379 Conventionals (1987 & Up) 20 Texas Hitch: Tow/Hitch Holes
JHC-0010-51	HC-0010-51	Bumper w/o Fog Lamp Holes	Peterbilt 378 & 379 Conventionals (1987 & Up) 20 Boxed Hitch: Tow/Hitch Holes
JHC-2010-02	HC-2010-02	Bumper	Peterbilt 378 & 379 Conventionals (1987 & Up) 16 Tapered, 2 Square Lamps Hitch: Tow/Hitch Holes
JHC-2010-06	HC-2010-06	Bumper	Peterbilt 378 & 379 Conventionals (1987 & Up) 18 Texas Square, 2 Square Lamps Hitch: Tow/Hitch Holes
JHC-2010-11	HC-2010-11	Bumper	Peterbilt 378 & 379 Conventionals (1987 & Up) 18 Boxed End, 2 Square Lamps Hitch: Tow/Hitch Holes
JHC-2010-41	HC-2010-41	Bumper	Peterbilt 378 & 379 Conventionals (1987 & Up) 20 Texas Square, 2 Square Lamps Hitch: Tow/Hitch Holes
JHC-2010-51	HC-2010-51	Bumper	Peterbilt 378 & 379 Conventionals (1987 & Up) 20 Boxed End, 2 Square Lamps Hitch: Tow/Hitch Holes

All parts supplied are JOHN'S TRUCK PARTS. Use of other manufacturer's names, part numbers, or trademarks are solely used for informational/identification purposes.

# BUMPERS



JTP #:	REPLACES #:	DESCRIPTION:	APPLICATION:
JHH-0010-15	HH-0010-15	Bumper w/o Fog Lamp Holes	Peterbilt 377 SBFA Conventionals (1987-1996) 13 Set Back Hitch: Tow/Hitch Holes
JHH-2010-15	HH-2010-15	Bumper	Peterbilt 377 SBFA Conventionals (1987-1996) 13 Set Back, 2 Square Lamps Hitch: Tow/Hitch Holes
JHL-0010-15	HL-0010-15	Bumper w/o Fog Lamp Holes	Peterbilt 385 SBFA Conventionals 13 Set Back Hitch: Tow/Hitch Holes
JHL-2010-15	HL-2010-15	Bumper	Peterbilt 385 SBFA Conventionals 13 Set Back, 2 Square Lamps Hitch: Tow/Hitch Holes
JHN-0010-15	HN-0010-15	Bumper w/o Fog Lamp Holes	Peterbilt 377AE SBFA Series (1997) 13 Set Back Hitch: Tow/Hitch Holes
JHN-2010-15	HN-2010-15	Bumper	Peterbilt 377AE SBFA Series (1997) 13 Set Back, 2 Square Lamps Hitch: Tow/Hitch Holes
JHOA-0010-16	HOA-0010-16	Bumper w/o Fog Lamp Holes	Peterbilt 587 Set Back Axle Models 16 Set Back Hitch: Tow/Hitch Holes
JHOA-5110-16	HOA-5110-16	Bumper	Peterbilt 587 Set Back Axle Models 16 Set Back, 2 OEM Fog Lamps Steps: Standard Step Hole Hitch: Tow/Hitch Holes
JHP-0010-18	HP-0010-18	Bumper w/o Fog Lamp Holes	Peterbilt 330 Series (1997-2005)
JHR-0210-16	HR-0210-16	Bumper w/o Fog Lamp Holes	Peterbilt 387 Series (1997-2001) 16 Set Back Steps: Center Step Hole Hitch: Tow/Hitch Holes
JHJ0210-16	HJ0210-16	Bumper w/o Fog Lamp Holes	Peterbilt 387 Series (2002 & Up) 16 Set Back Steps: Center Step Hole Hitch: Tow/Hitch Holes
JHJ2210-16	HJ2210-16	Bumper	Peterbilt 387 Series (2002 & Up) 16 Set Back, 2 Square Lamps Steps: Center Step Hole Hitch: Tow/Hitch Holes
JHT-0010-15	HT-0010-15	Bumper w/o Fog Lamp Holes	Peterbilt 355 Series (2005 & Up) 13 Set Back Hitch: Tow/Hitch Holes
JHU-0010-16	HU-0010-16	Bumper w/o Fog Light Holes	Peterbilt 386 Series (2006-2012) 16 Set Back Hitch: Tow/Hitch Hole
JHU-0210-16	HU-0210-16	Bumper w/o Fog Light Holes	Peterbilt 386 Series (2006-2012) 16 Set Back Steps: Center Step Hole Hitch: Tow/Hitch Holes
JHU-2210-16	HU-2210-16	Bumper	Peterbilt 386 Series (2006-2012) 16 Set Back, 2 Square Lamps Steps: Center Step Hole Hitch: Tow/Hitch Holes
JHV-0010-01	HV-0010-01	Bumper w/o Fog Lamp Holes	Peterbilt 388/389 & 365 Series (2007 & Up) 12 Tapered Hitch: Tow/Hitch Holes

All parts supplied are JOHN'S TRUCK PARTS. Use of other manufacturer's names, part numbers, or trademarks are solely used for informational/identification purposes.

JTP #:	REPLACES #:	DESCRIPTION:	APPLICATION:
JHV-0010-02	HV-0010-02	Bumper w/o Fog Lamp Holes	Peterbilt 388/389 & 365 Series (2007 & Up) 16 Tapered Hitch: Tow/Hitch Holes
JHV-0010-06	HV-0010-06	Bumper w/o Fog Lamp Holes	Peterbilt 388/389 & 365 Series (2007 & Up) 18 Texas Square Hitch: Tow/Hitch Holes
JHV-0010-11	HV-0010-11	Bumper w/o Fog Lamp Holes	Peterbilt 388/389 & 365 Series (2007 & Up) 18 Boxed End Hitch: Tow/Hitch Holes
JHV-0010-41	HV-0010-41	Bumper w/o Fog Lamp Holes	Peterbilt 388/389 & 365 Series (2007 & Up) 20 Texas Square Hitch: Tow/Hitch Holes
JHV-0010-51	HV-0010-51	Bumper w/o Fog Lamp Holes	Peterbilt 388/389 & 365 Series (2007 & Up) 20 Boxed End Hitch: Tow/Hitch Holes
JHX-0010-15	HX-0010-15	Bumper w/o Fog Lamp Holes	Peterbilt 367 Series (2007 & Up) 13 Set Back Hitch: Tow/Hitch Holes
JHZ-0010-16Y	HZ-0010-16Y	Bumper w/o Fog Lamp Holes	Peterbilt 579 Set Back Axle Models 16 Set Back w/ Extensions Hitch: Tow/Hitch Holes
JHZ-5110-16Y	HZ-5110-16Y	Bumper	Peterbilt 579 Set Back Axle Models 16 Set Back w/ Extensions 2 OEM Fog Lamps Steps: Standard Step Hole Hitch: Tow/Hitch Holes
JLE-0011-15	LE-0011-15	Bumper w/o Fog Lamp Holes	Volvo VNL Models 13 Set Back, Vented Hitch: Tow/Hitch Holes
JLE-0011-16	LE-0011-16	Bumper w/o Fog Lamp Holes	Volvo VNL Models 16 Set Back, Vented Hitch: Tow/Hitch Holes
JLE-2011-15	LE-2011-15	Bumper	Multiple Volvo Applications 13 Set Back, 2 Square Lamps, Vented Hitch: Tow/Hitch Holes
JLE-2011-16	LE-2011-16	Bumper	Multiple Volvo Applications 16 Set Back, 2 Square Lamps, Vented Hitch: Tow/Hitch Holes
JLH-0011-15	LH-0011-15	Bumper w/o Fog Lamp Holes	Volvo VNL Models (2004 & Up) 13 Set Back, Vented Hitch: Tow/Hitch Holes
JLH-0011-16	LH-0011-16	Bumper w/o Fog Lamp Holes	Volvo VNL Models (2004 & Up) 16 Set Back, Vented Hitch: Tow/Hitch Holes
JLH-2011-15	LH-2011-15	Bumper	Volvo VNL Models (2004 & Up) 13 Set Back, 2 Square Lamps, Vented Hitch: Tow/Hitch Holes
JLH-2011-16	LH-2011-16	Bumper	Volvo VNL Models (2004 & Up) 16 Set Back, 2 Square Lamps, Vented Hitch: Tow/Hitch Holes
JLH-5011-15	LH-5011-15	Bumper	Volvo VNL Models (2004 & Up) 13 Set Back, 2 OEM Fog Lamps, Vented Hitch: Tow/Hitch Holes
JLH-5011-16	LH-5011-16	Bumper	Volvo VNL Models (2004 & Up) 16 Set Back, 2 OEM Fog Lamps, Vented Hitch: Tow/Hitch Holes

All parts supplied are JOHN'S TRUCK PARTS. Use of other manufacturer's names, part numbers, or trademarks are solely used for informational/identification purposes.



# BUMPERS

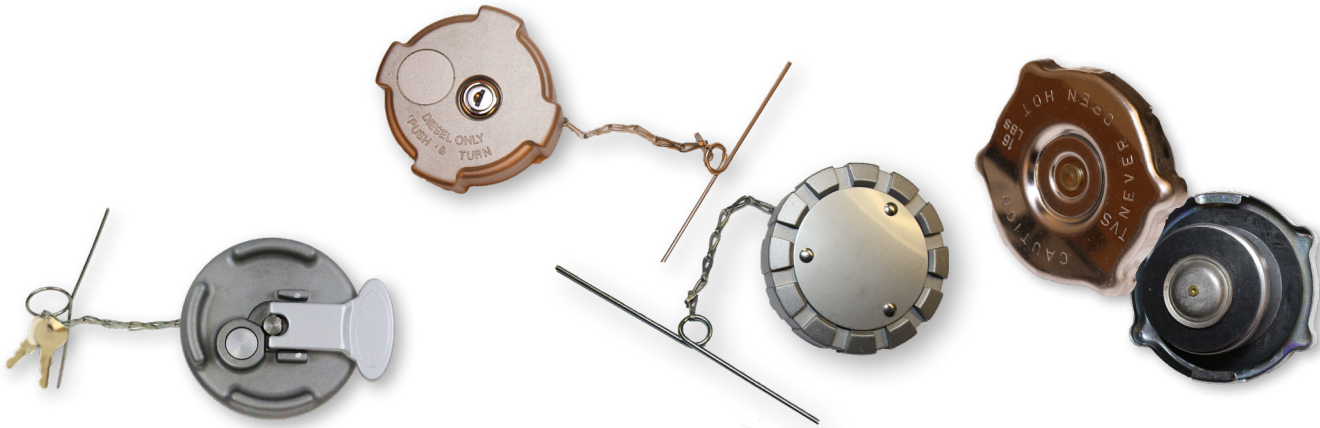


JTP #:	REPLACES #:	DESCRIPTION:	APPLICATION:
J23409	15-06837-002AM	Bumper	Peterbilt 387 Series
J18503	30402550	Bumper	Volvo VN1 Series (1998-2003)
J18988	3502-239-C	Bumper	International 9100, 9200 & 9400 Series Heavy Duty 11 Gauge
J23002	3610-935-C	Bumper	International 4200-4300 Series Medium Duty International 8600 Linehaul Convetionals 1 Piece, Large Tow Hook Holes
J23843	3610-939-C	Bumper	International 4200-4300 Series Medium Duty International 8600 Linehaul Convetionals (2004 & Up) 1 Piece Design, Painted Black w/ Steel Large Tow Hook Holes
J22700	A21-26266-002	Bumper w/ Fog Lamp Holes	Freightliner Columbia Class 9 Gauge, Includes Mounting Kit Chrome Finish
J22047	A21-28546-015F	Bumper w/ Fog Lamp Holes	Freightliner Cascadia Class (2007 & Up) 1 Piece Color: White
J22358	AM0420SSC	Bumper	International 9100, 9200 & 9400 Series Premium Conventinals 11 Gauge Chrome Finish
J23235	AM0451SSC	Bumper	International ProStar Linehaul Conventinals (2009 & Before) 11 Gauge Includes Mounting Brackets & Fillers Chrome Finish, Stainless Steel Clad Aluminum
J23419	HDR0256SSC	Bumper	Freightliner Cascadia Class (2008 & Up)
J18498	K0641591	Bumper w/ Fog Lamp Holes	Kenworth T600 Models
J22563	MA0510210-06	Bumper w/ Fog Lamp Holes	Kenworth W900 Models 18 Texas Square, 8 Gauge
J21239	MA08C0010-06	Bumper w/o Fog Lamp Holes	Peterbilt 379 Series (1987 & Up) 18 Texas Square Rolled Edges, Chrome Finish
J21168	MA75G0011-26	Bumper	Kenworth T800 Models (1986 & Up) 15 Tapered Bumper w/ 2 Hook Holes
J24148	MM0960NLSSC	Bumper w/o Fog Lamp Holes	Volvo VNL Models (2004 & Up) Thickness: 0.125
J22698	MM0960SSC	Bumper w/ Fog Lamp Holes	Volvo VNL Models (2003 & Up) Volvo VN2 Series (2004 & Up) Thickness: 0.125, Clad Aluminum
J19091	N71-1001	Bumper w/ Fog Lamp Holes	Kenworth T2000 Models Included Mounting Brackets
J21458	RKB001	Bumper w/o Fog Lamp Hole	Kenworth T600 Models
J18208	VNL-430-630-670	Bumper w/o Fog Lamp Holes	Volvo VN2 Series (2004 - 2014) One Piece Design For 3 Piece Bumper: Left 82721514, Right 82721516, Middle 82728568
J23028	J23028	Bumper w/ Fog Lamp Hole	Freightliner Cascadia Class (2008 & Up) 1 Piece, Includes Mounting Brackets & Fillers Chrome Over Steel
J22705	J22705	Bumper w/o Fog Lamp Holes	Freightliner Cascadia Class (2008 & Up) 1 Piece, Replaces Aeroclad Style, Includes Mounting Brackets & Fillers Chrome Over Steel
J22637	J22637	Bumper w/ Fog Lamp Holes	Freightliner M2 Class Replaces OEM 3 Piece Bumper; Includes Mounting Kit 10 Gauge

All parts supplied are JOHN'S TRUCK PARTS. Use of other manufacturer's names, part numbers, or trademarks are solely used for informational/identification purposes.

JTP #:	REPLACES #:	DESCRIPTION:	APPLICATION:
J22249	J22249	Bumper w/ Fog Lamp Hole	Kenworth T660 Model Integrated Fog Lamp Bezels, Includes Brackets Chrome Finish
J22119	J22119	Bumper w/o Fog Lamp Holes	Freightliner Cascadia Class (2008 & Up) Includes Frame, 1 Piece Design for OEM 3 Piece Color: White
J19661	J19661	Bumper w/ Fog Lamp Hole	Kenworth T800 Models 1 Piece Design Replaces OEM 3 Piece Color: White
J21019	MA25T001-18	Bumper w/ Fog Lamp Holes	Kenworth T300 Model (2002 & Up) 8 Gauge
J25387	J25387	Bumper	Western Star 4964 Constellation & Heritage Models (1989 & Up) 16 Tapered End
J25388	J25388	Bumper	Western Star 4964 Constellation & Heritage Models (1989 & Up) 18 Texas Square
J25386	J25386	Bumper	Kenworth T800 Models 14 Tapered, Open End
J26107	52101E0243	Bumper	Hino 238/258/268/338 Series (2005 & Up)
J26108	52101E0A91	Bumper	Hino 238/258/268/338 Series (2005 & Up)
J24147	21-28443-010	Bumper Reinforcement, Center	Freightliner Cascadia Class (2008 & Up) Works w/ Bumper Center J24970 (21-28446-002)
J24150	21-27299-000	Bumper Trim, Center	Freightliner Cascadia Class (2008-2014) Chrome Finish
J24970	21-28446-002	Bumper, Center	Freightliner Cascadia Class (2008 & Up) w/ Slots, Unpainted Accepts Chrome Overlay J24150 (21-27299-001)
J18987	21-20113-003	Bumper, Center	Freightliner FLD Class Color: White
J20386	21-26020-006	Bumper, Center	Freightliner Columbia Class (2002-2011)
J20359	A21-28177-001	Bumper, Center	Freightliner Century Class
J20358	A21-28177-001C	Bumper, Center	Freightliner Century Class
J19152	N71-1065-101	Bumper, Center	Kenworth T800 Models
J25368	21-28446-000	Bumper, Center	Freightliner Cascadia Class (2008 & Up) w/o Slots, Does Not Accept Chrome Overlay
J22316	N71-1003L	Bumper, LH	Kenworth T2000 Models (1996-2006) Color: White
J20734	N71-1162-611	Bumper w/ Fog Lamp Holes, LH	Kenworth T660 Models Integrated Fog Lamp Bezels Includes Brackets
J20733	N71-1162-611R	Bumper w/ Fog Lamp Holes, RH	Kenworth T660 Models Integrated Fog Lamp Bezels Includes Brackets
J22315	N71-1003R	Bumper, RH	Kenworth T2000 Models (1996-2006) Color: White
J24107	A21-28546-052	Complete 6 Piece Bumper w/o Fog Lamp Holes	Freightliner Cascadia Class Grey Finish
J24106	A21-28546-054	Complete 6 Piece Bumper w/ Fog Lamp Holes	Freightliner Cascadia Class Grey Finish

All parts supplied are JOHN'S TRUCK PARTS. Use of other manufacturer's names, part numbers, or trademarks are solely used for informational/identification purposes.



JTP #:	REPLACES #:	DESCRIPTION:	PRODUCT INFORMATION:	APPLICATION:	WORKS W/:
J21759	20519046	Filler Cap	—	Volvo VN1 & Early VN Series	J22161
J21760	20968839	Filler Cap	—	Volvo VN2 Series	J22162
J22561	6794968	Filler Cap	—	Volvo WIA Series (1996 & Before)	—
J22562	BHT W3678001	Filler Cap	—	Freightliner Cascadia Class	—
J21361	03-37017-000	Fuel Cap	3, Non-Locking, Aluminum Vented, 1/4 Turn Female	Freightliner FLD, Columbia, Century & M2 Class	—
J21362	03-37017-002	Fuel Cap	3, Locking W/ Keys, Aluminum Vented, 1/4 Turn Female	Freightliner FLD, Columbia, Century & M2 Class	—
J20270	11-04859-100	Fuel Cap	Lever Style Non-Locking, Aluminum Vented Across Filler Neck: 4	Multiple Peterbilt Applications	J21251
J20269	11-04859-200	Fuel Cap	Lever Locking W/ Keys, Aluminum Vented Across Filler Neck: 4	Multiple Peterbilt Applications	J21251
J17348	2040-848-C	Fuel Cap	3 Non-Locking Cap W/ 8 Chain, Aluminum	International 8000 Series Heavy Duty	—
J21685	20770657	Fuel Cap	Non-Locking, Aluminum 8 Retaining Chain Threaded Neck 3	Volvo VN & VNL Models	—
J23292	20770679	Fuel Cap	Non-Locking	Multiple Mack Applications	—
J23949	20770691	Fuel Cap	Locking, Aluminum 6.5 Retaining Chain 3 Threaded Neck	Multiple Volvo Applications	—
J21359	249-2B	Fuel Cap	3, Non-Locking, Aluminum Vented, # Of Threads: 5.5 Custom	Kenworth T600, T660, T800 & W900 Models	J21376
J21360	249-4B	Fuel Cap	3, Locking, Aluminum Vented, # Of Threads: 5.5 Custom	Kenworth T600, T660, T800 & W900 Models	J21376
J22346	25132213	Fuel Cap	Non-Locking, Aluminum # of Threads: 8 Threaded Neck: 2.5	Multiple Mack Applications	—
J22345	25195379	Fuel Cap	Non-Locking, Aluminum # of Threads: 8 Threaded Neck: 3	Multiple Mack Applications	—
J17331	508-010-C	Fuel Cap	4 Non-Locking Cap W/ 3 Neck	International 4000 Series Medium Duty	—
JA968	576-746-C	Fuel Cap	2, Non-Locking # Of Threads: 11.5	International 4000 Series Medium Duty	—
J23096	8125-02	Fuel Cap Kit	3, Vented Threaded Neck: 3 # of Threads: 5.5 Custom	Kenworth T600, T660, T800 & W900 Models	J21376
J21251	490-89	Fuel Cap O-Ring	—	Multiple Peterbilt Applications	J20270, J20269

All parts supplied are JOHN'S TRUCK PARTS. Use of other manufacturer's names, part numbers, or trademarks are solely used for informational/identification purposes.





JTP #:	REPLACES #:	DESCRIPTION:	PRODUCT INFORMATION:	WORKS W/:
J19728	3556-205-C	Door Module, RH	—	—
J25257	R60-6001-650	Door Seal	Peterbilt 379 Series (2005 & Before) Length: 162.50"	—
J19547	J19547	Door Shell, LH	Freightliner Columbia & Century Class	—
J19550	J19550	Door Shell, RH	Freightliner M2-106 Class	—
J23478	J23478	Door Trim (Pair), L & RH	—	—
J19870	2505-435-C	Door Window Regulator, LH	International 9700 & 9800 Series Heavy Duty	—
J19875	2505-436-C	Door Window Regulator, RH	International 9700 & 9800 Series Heavy Duty	—
J20713	22-54495-000	Ignition & Door Key, Blank	Multiple Freightliner Applications (2000 & Up)	—
J24865	22-52205-000	Key Blank	Freightliner Sterling Class	—
J7691	1669-309-C	Key, Blank	Multiple International Applications	—
J23387	20719248	Key, Blank	Volvo VNL Models Multiple Freightliner Applications No Grooves	—
J23732	2505-201-C	Pull Cup Container	International 4100-4400 Series Medium Duty International 7300-7700 Series Severe Duty	—
J4636	162-337-R	Regulator	—	—
J19878	2505-421-C	Regulator Motor, RH	International 9700 & 9800 Series Heavy Duty	—
J21200	20-12972	Striker Pin	Peterbilt 330, 335, 378 & 379 Series	—
J22988	25624851	Striker Pin	Multiple Mack Applications	—
J20670	A-681-721-02-K0	Striker Pin	Freightliner Century, Columbia & FLD Class	—
J22152	K250-68-1	Cab/Sleeper Door Striker Pin	Multiple Kenworth Models Thread Size: M12-1.75 Head Type: T50	—
J19978	20-08179L	Door Handle	Peterbilt 330, 357, 362, 375, 377 & 379 Series (1995-2005)	J19979
J19979	20-08179R	Outside Door Handle	Peterbilt 330, 357, 362, 375, 377 & 379 Series (1995-2005)	J19978
J18955	20398466	Door Handle	Volvo VN1 Series	J18956
J18956	20398467	Door Handle	Volvo VN1 Series	—
J19879	2505-423-C	Door Handle	International 9700 & 9800 Series Heavy Duty	J19879, J19871, J19876, J19874
J18815	A18-35381-000	Door Handle	Freightliner Cascadia, Columbia & M2 Class	J18816
J18816	A18-35381-001	Door Handle	Freightliner Columbia & FLD Class	J18815
J18817	A18-42228-000	Door Handle, LH	Freightliner Columbia Class (1998-2003)	J18818
J19871	2505-424-C	Door Handle, LH	International 9700 & 9800 Series Heavy Duty	J19879, J19871, J19876, J19874
J22401	K294-411PAK	Door Handle, LH	Kenworth T2000T Models	J22501

All parts supplied are JOHN'S TRUCK PARTS. Use of other manufacturer's names, part numbers, or trademarks are solely used for informational/identification purposes.

# DOORS & COMPONENTS



JTP #:	REPLACES #:	DESCRIPTION:	PRODUCT INFORMATION:	WORKS W/:
J19117	A18-42228-002	Door Handle, LH	Freightliner Columbia Class (2004 & Up)	J19118
J25049	K294426PAK	Door Handle, LH	Kenworth T300, T450, T600A, T800 & W900 Models	—
J19874	2587-515-C	Door Handle, LH	International 9700 & 9800 Series Heavy Duty	J19879, J19871, J19876, J19874
J19118	A18-42228-003	Door Handle, RH	Freightliner Columbia Class (2004 & Up)	J19117
J22501	K294-411RPAK	Door Handle, RH	Kenworth T2000T Models	J22401
J19876	2505-425-C	Door Handle, RH	International 9700 & 9800 Series Heavy Duty	J19879, J19871, J19876, J19874
J18818	A18-42228-001	Door Handle, RH	Freightliner Century & Columbia Class (1998-2003) Freightliner Coronado & M2-106 Class	J18817
J22500	R56-1025L	Front Door Handle, LH	Kenworth T270, T300, T370, T600 & T660 Models (2001-2011)	J22499
J22499	R56-1025R	Front Door Handle, RH	Kenworth T270, T300, T370, T600 & T660 Models (2001-2011)	J22500
J20643	18-48225-000	Inner Paddle Handle, LH	Freightliner Columbia & Century Class	J20644
J20644	18-48225-001	Inner Paddle Handle, RH	Freightliner Columbia & Century Class	J20643
J23168	A9017600459	Sliding Door Handle		—
J8530	1649-776-C	Window Handle	International 9670, 9370, Paystar, Transtar, COF5870 & S Series Heavy Duty	—
J3200	475-196-C	Window Handle	International 9670, 9370, PayStar, TranStar, COF5870 & S Series Heavy Duty	—
J21953	3549-259-C	Door Hinge Assembly	International 4200-4400 Series Medium Duty International LoneStar & ProStar Linehaul Conventionals International RH Series	—
J20668	A18-53290-000	Door Hinge Assembly	Freightliner Century & Columbia Class	—
JE627	3550-925-C	Door Handle	International 4700, 4900, 7100 & 8100-8300 Series Medium Duty	—
J17328	1677-432-C	Door Latch	International 9670 Series Medium Duty (August 1989 & Up)	J17329
J17329	1677-433-C	Door Latch	International 9670 Series Medium Duty (August 1989 & Up)	J17328
J22005	20-08229L	Door Latch, LH	Peterbilt 359, 387 & 379 Series Peterbilt 370 Series (2005 & Before)	J22006
J13951	477-257-C	Door Latch, LH	International 1000 & 4000 Series Medium Duty	J13952
J7630	498-003-C	Door Latch, LH	International 9370 & 9670 Series Medium Duty (June 1989 & Before)	J7631
J19838	A18-43367-000	Door Latch, LH	Freightliner Columbia, Century & FLD Class	J19839
J18808	A18-27783-000	Door Latch, LH	Freightliner Columbia & FLD Class	J18809
J23819	21505893	Door Latch, LH	Volvo VN, VT & VNL Models	—
J23820	21505894	Door Latch, RH	Volvo VN, VT & VNL Models	—
J18809	A18-27783-001	Door Latch, RH	Freightliner Columbia & FLD Class	J18808
J19839	A18-43367-001	Door Latch, RH	Freightliner Columbia, Century & FLD Class	J19838
J7631	498-004-C	Door Latch, RH	International 9370 & 9670 Series Medium Duty (June 1989 & Before)	J7630
J13952	477-258-C	Door Latch, RH	International 1000 & 4000 Series Medium Duty	J13951
J22006	20-08229R	Door Latch, RH	Peterbilt 359, 387 & 379 Series Peterbilt 370 Series (2005 & Before)	J22005
J24997	A18-59019-000	Interior Cabinet Latch Handle	Freightliner Cascadia Class (2009-2012)	—
J19872	2593-962-C	Powered Door Latch, LH	International 9700 & 9800 Series Heavy Duty	—
J19877	2593-963-C	Powered Door Latch, RH	International 9700 & 9800 Series Heavy Duty	—
J17330	1677-434-C	Door Lock	International 9670 Series Heavy Duty (August 1989 & Up)	J18290

All parts supplied are JOHN'S TRUCK PARTS. Use of other manufacturer's names, part numbers, or trademarks are solely used for informational/identification purposes.

JTP #:	REPLACES #:	DESCRIPTION:	PRODUCT INFORMATION:	WORKS W/:
J18290	1677-435-C	Door Lock	International 9670 Series Heavy Duty (August 1989 & Up)	J17330
J23459	A22-57157-000	Door Lock Cylinder W/ Key Set	Multiple Freightliner Applications (2004-2015) Except Western Star	—
J23467	A22-63159-000	Door Lock Cylinder W/ Key Set	Multiple Freightliner Applications (2004-2015) Except Western Star	—
J22691	A22-52261-000	Door Lock Kit	Freightliner Sterling Class Ignition & Door Lock Tumblers W/ Keys	—
J5982	578-065-C	Door Lock, LH	—	—
J19549	J19549	Door Shell, LH	Freightliner M2-106 Class	—
J22129	J22129	Door, LH	Freightliner M2 Class Complete Door W/ Glass, Door Panel & Mirrors	—
J22130	J22130	Door, RH	Freightliner M2 Class Complete Door W/ Glass, Door Panel & Mirrors	—
J23200	596807	Ignition & Door Key, Blank	Multiple Kenworth Applications	—
J21715	2506-694-C	Ignition & Door Key, Blank	International 4100-4400 Series Medium Duty, International 7000 Series Severe Duty International Prostar Linehaul Conventionals International RH Series	—
J20713	22-54495-000	Ignition & Door Key, Blank	Multiple Freightliner Applications (2000 & Up)	—
J7691	1669-309-C	Key, Blank	Multiple International Applications	—
J23387	20719248	Key, Blank	Volvo VNL Models Multiple Freightliner Applications No Grooves	—
J18814	A680-697-00-98	Weatherstrip	Freightliner FL60-80 Class	—
J4636	162-337-R	Regulator	—	—

All parts supplied are JOHN'S TRUCK PARTS. Use of other manufacturer's names, part numbers, or trademarks are solely used for informational/identification purposes.

# FENDERS & FAIRINGS



JTP #:	REPLACES #:	DESCRIPTION:	PRODUCT INFORMATION:	WORKS W/:
J24095	20530283	Fairing Lock Attachment	Multiple Volvo Applications	—
J25491	82437425	Fairing Retainer	Volvo VN & VNL Models	—
J23356	22-61139-000	Lower Side Fairing Skirt, LH	Freightliner Cascadia Class	J23355
J23355	22-61139-001	Lower Side Fairing Skirt, RH	Freightliner Cascadia Class	J23356
J23482	26937-4	Side Fairing Isolator	Multiple Kenworth Applications	—
J22331	A33-1045-200	Side Fairing LH, Tank Cover	Kenworth T660 Models Color: White	J22330
J22330	A33-1045-200R	Side Fairing RH, Tank Cover	Kenworth T660 Models Color: White	J22331
J22314	K219-615-5	Side Fairing, LH	Kenworth T600B Models Color: White	J22313
J22327	A33-1064-3011100	Side Fairing, LH Center	Kenworth T660 Models Color: White	J22326
J23353	22-61126-000	Side Fairing, LH Front	Freightliner Cascadia Class (2008-2012)	J23354
J22329	A33-1035-100	Side Fairing, LH Rear	Kenworth T660 Models Color: White	J22328
J22313	K219-616-5	Side Fairing, RH	Kenworth T600B Models	J22314
J22326	A33-1064-3011100R	Side Fairing, RH Center	Kenworth T660 Models Color: White	J22327
J23354	22-61126-001	Side Fairing, RH Front	Freightliner Cascadia Class (2008-2012)	J23353
J22328	A33-1035-100R	Side Fairing, RH Rear	Kenworth T660 Models Color: White	J22329
J23327	15-06080	Fender Liner	Peterbilt 379 Series	J22166, J22167
J25593	L85-6036	Front Fender Support, LH	Peterbilt 379 & 389 Series	—
J25594	L85-6036R	Front Fender Support, RH	Peterbilt 379 & 389 Series	—
J24026	A22-69527-000	Splash Shield, LH	Freightliner Cascadia Class (2007 & Up) Cab Mounted	—
J24027	A22-69527-001	Splash Shield, RH	Freightliner Cascadia Class (2007 & Up) Cab Mounted	—
J18647	2237670-000	Fender Extension	Freightliner FLD120 Class	J18648
J18648	2237670-001	Fender Extension	Freightliner FLD120 Class	J18647
J22337	8079602	Fender Extension, LH	Volvo VNL Model (1997-2002) Color: White	J22336

All parts supplied are JOHN'S TRUCK PARTS. Use of other manufacturer's names, part numbers, or trademarks are solely used for informational/identification purposes.

JTP #:	REPLACES #:	DESCRIPTION:	PRODUCT INFORMATION:	WORKS W/:
J18504	A22-57423-000	Fender Extension, LH	Freightliner Columbia C112 & C120 Class Color: White	J18505
J18454	N71-1067-3	Fender Extension, LH	Kenworth T800 Models	J19152, J18453
J18453	N71-1067-3R	Fender Extension, RH	Kenworth T800 Models Color: White	J19152, J18454
J18505	A22-57423-001	Fender Extension, RH	Freightliner Columbia C112 & C120 Class Color: White	J18504
J22336	8078351	Fender Extension, RH	Volvo VNL Model (1997-2002) Color: White	J22337
J22167	15-04905M001R5	Fender, RH	Peterbilt 379 Series	J23327, J22166
J24908	15-04905M001R5F	Fender, RH	Peterbilt 379 Series	
J22166	15-04905M001L5	Fender, LH	Peterbilt 379 Series	J23327, J22167
J18202	3518-981-C	Fender, LH	International 9100, 9100I, 9200, 9200I, 9400 & 9400I Series Color: White	J18201
J18449	1657-747-C	Fender, LH	International 3800, 4700 & 4900 Series Medium Duty Color: White	J18448
J18199	3566-716-C	Fender, LH	International 4300, 4400 & 8500 Series Medium Duty Color: White	J18200
J24888	L35-6035M00	Fender, LH	Peterbilt 388 & 389 Models	—
J24907	15-04905M001L5F	Fender, LH	Peterbilt 379 Series	—
J18201	3518-982-C	Fender, RH	International 9100, 9100I, 9200, 9200I, 9400 & 9400I Series Heavy Duty Color: White	J18202
J18448	1657-748-C	Fender, RH	International 3800, 4700 & 4900 Series Medium Duty Color: White	J18449
J24889	L35-6035M00R	Fender, RH	Peterbilt 388 & 389 Models	—
J18200	3566-717-C	Fender, RH	International 4300, 4400 & 8500 Series Medium Duty Color: White	J18199
J23091	J23091	Fender Post Kit	International 9600-9800 Premium Cabovers Single Bolt, 2 Posts Washers & Bolts	—
J22285	742S	Quarter Fender Set	Includes Left & Right Fenders Includes Clamp	J23091
J22382	FLT1900KIT	Quarter Fender Set	Universal Applications Includes Left & Right Fenders Includes Clamp	J23091

All parts supplied are JOHN'S TRUCK PARTS. Use of other manufacturer's names, part numbers, or trademarks are solely used for informational/identification purposes.



# GRILLES & COMPONENTS



JTP #:	REPLACES #:	DESCRIPTION:	PRODUCT INFORMATION:	WORKS W/:
J21166C	13-03956A101	Crown Surround Kit	Peterbilt 379 Series 4 - Piece Surround Kit Stainless Steel	—
J26019	L29-6153-100	Grill Surround	Kenworth T680 Models (2013 & Up) Plastic ABS	—
J21167	13-03507	Grille	Peterbilt 379 Series 42.5 (Tapered to 41) X 35.75 Stainless Steel Works W/ 119 & 127 Hood	—
J23056	3501-482-C	Grille Bezel	International 9200 & 9400 Premium Conventionals International 5500I, 5600I & 5900I Conventionals Polished Aluminum	—
J19734	A22-65847-000	Grille Bug Screen	Freightliner Columbia CL112 & CL120 Class	—
J19995	17-12127-000	Grille Isolator	Freightliner FLD Class 4 Used Per Grille	—
J18659	L29-1053-100	Grille Shell	Kenworth T600 & 660 Models	—
J20797	K213-2900	Grille Shell, Bottom	Kenworth T800 Models Stainless Steel	—
J20798	K212-189	Grille Shell, LH	Kenworth T800 Models Stainless Steel	—
J21226	13-03964M001L-P	Grille Shell, LH	Peterbilt 379 Series Polished Aluminum Works W/ Long Hood (127)	J21227, J21166, J21229, J21228, J21223, J21222
J21227	13-03964M001R-P	Grille Shell, RH	Peterbilt 379 Series Polished Aluminum Works W/ Long Hood (127)	J21226, J21166, J21229, J21228, J21223, J21222
J20799	K212-189R	Grille Shell, RH	Kenworth T800 Models Stainless Steel	—
J20796	K212-205	Grille Shell, Top	Kenworth T800 Models Stainless Steel	—
J24904	J24904	Grille Surround Kit	Kenworth W900L models Stainless Steel Includes: K213-3205, K212-203, K212-203R, K212-204, K212-204R, K167-286 & K167-407 (Qty: 2)	—
J21166	13-03956A101P	Grille Surround Kit	Peterbilt 379 Series Polished Aluminum Works W/ Long Hood Contains 6 Parts: J21222, J21227, J21229, J21223, J21228 & J21226 Available As An Assembly Or Separately	J21226, J21227, J21229, J21228, J21223, J21222

All parts supplied are JOHN'S TRUCK PARTS. Use of other manufacturer's names, part numbers, or trademarks are solely used for informational/identification purposes.

JTP #:	REPLACES #:	DESCRIPTION:	PRODUCT INFORMATION:	WORKS W/:
J21229	13-03529P	Grille Trim Molding, Lower	Peterbilt 379 Series Polished Aluminum Works w/ Long Hood (127)	J21226, J21227, J21166, J21228, J21223, J21222
J21228	13-03531P	Grille Trim Molding, Upper	Peterbilt 379 Series Polished Aluminum Works w/ Long Hood (127)	J21226, J21227, J21166, J21229, J21223, J21222
J21223	13-03546P	Grille, Bottom	Peterbilt 379 Series Polished Aluminum Works w/ Long Hood (127)	J21226, J21227, J21166, J21229, J21228, J21222
J20800	K137-269	Grille, Center	Kenworth T800 Models Stainless Steel	
J21222	13-03515P	Grille, Crown	Peterbilt 379 Series Polished Aluminum Works w/ Long Hood (127)	J21226, J21227, J21166, J21229, J21228, J21223
J19460	3556-409-C	Grill W/ Bug Screen	International Transtar, 8600 & 9500 Series (2002 & Up) Chrome Finish	—
J23426	J23426	Grille	Prostar Linehaul Conventionals Aerodynamic design Reinforced Bars Angled	—
J18215	T379	Grille w/o Bug Screen	Peterbilt 379 Series (1986-2006) Works w/ 127 Long Hood	—
J18213	T-800	Grille w/o Bug Screen	Kenworth T800 Models Chrome Finish	—
J18210	20505759	Grille w/o Bug Screen	Volvo 630, 660, 680 & VNL Models (2003 & Up)	—
J18209	A17-12623-014	Grille w/o Bug Screen	Freightliner Century C112 & C120 Class (1997-2002) Dimensions: 40 x 24 Works w/ Outboard Hinge Hoods Brushed Aluminum	—
J24113	53100-E0062-HI	Grille	Hino 238, 258, 268 & 338 Series (2011 & Up) Chrome Finish	—
J25561	53101-E0040	Grille	Hino 238, 258, 268 & 338 Series (2005-2010)	—
J18203	3566-927-C	Grille w/ Bug Screen	International 9100, 9100I, 9200, 9200I, 9400 & 9400I Series Heavy Duty Dimensions: 41.75 x 23.75 Chrome Finish	J23056
J18216	377-378	Grille w/o Bug Screen	Peterbilt 377 & 378 Series Dimensions: 41.75 x 33.75	—
J18662	4300	Grille w/o Bug Screen	International 4200-4400 Series Medium Duty Dimensions: 57 x 25 Plastic, Chrome Finish	—
J18658	8084221	Grille w/o Bug Screen	Volvo VN1 Series (1997-2002) Dimensions: 42 x 26 Works w/ Outboard Hinge Hoods Chrome Finish	—
J18211	8088238	Grille w/o Bug Screen	Volvo VN1 Series (1997-2002) Dimensions: 41.5 x 25.75 Billet Style, Brushed Aluminum	—
J20392	A17-12934-000	Grille w/o Bug Screen	Freightliner FLD Classic Class Dimensions: 44 x 42 Brushed Aluminum	J19995
J25287	A17-12935-000	Grille	Freightliner FL60, FL70 & FL80 Class Dimensions: 44 X 20.25 Plastic	—

All parts supplied are JOHN'S TRUCK PARTS. Use of other manufacturer's names, part numbers, or trademarks are solely used for informational/identification purposes.

# GRILLES & COMPONENTS



JTP #:	REPLACES #:	DESCRIPTION:	PRODUCT INFORMATION:	WORKS W/:
J21034	A17-14531-000	Grille	Freightliner Sterling LT9511 Class Grey Fiberglass	—
J18217	A17-14768-000	Grille w/ Bug Screen	Freightliner FL60, 70 & 80 Class (1991-2007) Dimensions: 44 x 20.25 Brushed Aluminum Upgrade From Plastic OEM Style	J19995
J19521	A17-14787-000	Grille w/o Bug Screen	Freightliner M2-106 Class Dimensions: 45.75 X 17.25 Plastic, Painted Finish	—
J18649	A17-15251-000	Grille w/o Bug Screen	Freightliner Columbia CL112 & CL120 Class Dimensions: 48.2 x 25 Chrome Finish	J19734, J20645
J19106	A17-15624-003	Grille w/o Bug Screen	Freightliner Cascadia Class Dimensions: 57.4 x 34.5 Chrome Finish	—
J18207	FLD-120	Grille w/o Bug Screen	Freightliner FLD120, 132 & 112 Class Dimensions: 37 x 42 Brushed Aluminum	J19995
J18214	GMF 561-M2	Grille w/o Bug Screen	Mack CH Models Dimensions: 40.25 x 30.75	—
J18212	T-600 AERO	Grille w/o Bug Screen	Kenworth T600 Models (1990 & Up) Dimensions: 35 x 27 Black Finish	—
J21422	6-MF-580-M	Grille W/ Bug Screen	Mack Vision CX & CXN Models Dimensions: 41 X 27 Chrome Finish	—
J19522	A17-14787-001	Grille W/ Bug Screen	Freightliner M2-106 Class Dimensions: 45.75 X 17.25 Chrome Finish	—
J18650	A17-15251-002	Grille w/ Bug Screen	Freightliner Columbia CL112 & CL120 Class Dimensions: 48 x 25 Includes Isolator Nuts w/ Screws Chrome Finish	J19734, J20645
J22168	A17-15685-000	Grille W/ Bug Screen	Freightliner M2-112 Class Dimensions: 52 X 27 Chrome Finish	—
J18651	A17-16132-001	Grille w/ Bug Screen	Freightliner Century C112 & C120 Class Dimensions: 44.25 x 28.75 Works W/ Inboard Hinge Hoods Chrome Finish	—
J24871	A17-14768-000CH	Grille W/ Bug Screen	Freightliner FL60, FL70, FL80, FL106 & FL112 Class Dimensions: 44 x 20.25 Chrome Finish	—
J24869	A17-14768-000PP	Grille W/ Bug Screen	Freightliner FL60, FL70, FL80, FL106 & FL112 Class Dimensions: 44 x 20.25 Painted Plastic Finish	—

All parts supplied are JOHN'S TRUCK PARTS. Use of other manufacturer's names, part numbers, or trademarks are solely used for informational/identification purposes.



JTP #:	REPLACES #:	DESCRIPTION:	PRODUCT INFORMATION:	WORKS W/:
J19975	1661-763-C	Bezel, LH	International 3800, 4700, 4800, 8100 & 8200 Series (1995-2004)	J19976
J21412	2505-370-C	Bezel, LH	International 9000, 9100, 9200, 9400 & 9900 Series Premium Conventionals	J21413
J20537	A06-20711-000	Bezel, LH	Freightliner Century Class (1996-2005)	J20538
J20538	A06-20711-001	Bezel, RH	Freightliner Century Class (1996-2005)	J20537
J21413	2505-371-C	Bezel, RH	International 9000, 9100, 9200, 9400 & 9900 Series Premium Conventionals	J21412
J19976	1661-764-C	Bezel, RH	International 3800, 4700, 4800, 8100 & 8200 Series (1995-2004)	J19975
J22420	N18-1002-100	Fog Lamp Bezel, LH	Kenworth T660 Models No Holes	J22419
J22422	N18-1002-200	Fog Lamp Bezel, LH	Kenworth T660 Models (2007 & Up)	J22421
J22421	N18-1002-200R	Fog Lamp Bezel, RH	Kenworth T660 Models (2007 & Up)	J22422
J22419	N18-1002-100R	Fog Lamp Bezel, RH	Kenworth T660 Models No Holes	J22420
J18645	06-32242-002	Headlamp Bezel, LH	Freightliner Columbia Class Chrome Finish	J18646, J19777, J19778
J18660	07785AA3010001	Headlamp Bezel, LH	Kenworth T300 Models (2003-2010) Chrome Finish	J18661, J23583
J21788	A17-14930-000	Headlamp Bezel, LH	Freightliner M2-106 & M2-112 Class Chrome Finish	J21789, J19774, J19775
J22696	3-2048-3	Headlamp Bezel, LH/RH	Kenworth C500, T600 & T800 Models Peterbilt 379 Series Freightliner FLD120 Class Chrome Finish	—
J21789	A17-14930-001	Headlamp Bezel, RH	Freightliner M2-106 & M2-112 Class Chrome Finish	J21788, J19774, J19775
J18661	07785AA3010002	Headlamp Bezel, RH	Kenworth T300 Models (2003-2010) Chrome Finish	J18660, J23583
J18646	06-32242-003	Headlamp Bezel, RH	Freightliner Columbia Class Chrome Finish	J18645, J19777, J19778
J19772	A06-20738-000	Bezel & Signal Lamp, LH	Freightliner FL & FLD120 Class	J19773
J19773	A06-20738-001	Bezel & Signal Lamp, RH	Freightliner FL & FLD120 Class	J19772
J21134	20511275	Fog Lamp	Volvo VN1 Series 12 Volt	
J19894	A06-75742-000	Fog Lamp	Freightliner Century & Columbia Class	—

All parts supplied are JOHN'S TRUCK PARTS. Use of other manufacturer's names, part numbers, or trademarks are solely used for informational/identification purposes.

# LAMPS & COMPONENTS



JTP #:	REPLACES #:	DESCRIPTION:	PRODUCT INFORMATION:	WORKS W/:
J25321	3815-291-C	Fog Lamp	International ProStar Linehaul Conventionals International RH Series International 9100-9400 Premium Conventionals Halogen 12 Volt, DOT	—
J23417	54-1062-100	Fog Lamp w/ Bulb, LH/RH	Kenworth T660 Models Peterbilt 579 & 587 Series Includes Bulb H3-55	—
J22767	20737496	Fog Lamp, LH	Volvo VN & VNL Models Includes Day Time Running Lamps 12 Volt, 2 Bulb	J22768
J22765	20737500	Fog Lamp, LH	Volvo VNL Models Small Unit, 12 Volt/55 Watt 1 Bulb	J22766
J22371	A06-51908-000	Fog Lamp, LH	Freightliner Cascadia Class	J22372
J22372	A06-51908-001	Fog Lamp, RH	Freightliner Cascadia Class	J22371
J22766	20737501	Fog Lamp, RH	Volvo VNL Models Small Unit, 12 Volt/55 Watt 1 Bulb	J22765
J22768	20737497	Fog Lamp, RH	Volvo VN & VNL Models Includes Day Time Running Lamps 12 Volt, 2 Bulb	J22767
J25690	22067654	Front Fog Lamp	Mack CHU, CXU & GU Models	—
J22701	A06-48469-000	Headlamp	Freightliner Century Class (2007-2013) Middle Lamp, Bulb Not Included	—
J23798	16-09190L	Headlamp Assembly w/o Harness, LH	Peterbilt 330 & 335 (2005-2015), 325 (2008-2012), 337 (2010-2015), 340 (2006-2012), 348 (2012-2015), 382 (2012-2014), 384 (2008-2014), 386 (2006-2015) & 387 Series (2000-2011) 12 Volts, 55 Watts	—
J23799	16-09190R	Headlamp Assembly w/o Harness, RH	Peterbilt 330 & 335 (2005-2015), 325 (2008-2012), 337 (2010-2015), 340 (2006-2012), 348 (2012-2015), 382 (2012-2014), 384 (2008-2014), 386 (2006-2015) & 387 Series (2000-2011) 12 Volts, 55 Watts 12 Volts, 55 Watts	—
J9094	1661-234-C	Headlamp Switch	—	—
J23785	25154252	Headlamp w/ Signal, LH	Mack CL713 (1993-2003), CH600 (1990-2007), CL600 (1992-1999) & CL700 Models (1993-2007)	—
J23784	25163253	Headlamp w/ Signal, RH	Mack CL713 (1993-2003), CH600 (1990-2007), CL600 (1992-1999) & CL700 Models (1993-2007)	—
J22961	82329124AE	Headlamp, Hi-Perf Angel Eye, LH	Volvo VNL Models (2004 & Up) Featuring High Performance, Projection Style Lamp Does Not Require Reprogram Of Computer Works w/ OEM Harness & Mounts w/ OEM Hardware	J22962
J22962	82329127AE	Headlamp, Hi-Perf Angel Eye, RH	Volvo VNL Models (2004 & Up) Featuring High Performance, Projection Style Lamp Does Not Require Reprogram Of Computer Works w/ OEM Harness & Mounts W/ OEM Hardware	J22961
J23242	P54-1059-100	Headlamp, LH	Kenworth T170, T270, T370 & T660 Models	J23243
J25206	A06-32496-006	Headlamp, LH	Freightliner Columbia Class (1996-2004)	—
J21408	3502-928-C	Headlamp, LH	International 9000, 9100, 9200, 9400 & 9900 Series Heavy Duty	J21411
J19899	3574-387-C	Headlamp, LH	International 4300 & 4400 Series Medium Duty International CE200 & CE300 Series School Bus Includes Wire Harness For Side Marker Lamp	J19900
J21988	A06-51907-006	Headlamp, LH	Freightliner Cascadia Class (2008-2013)	J21989

All parts supplied are JOHN'S TRUCK PARTS. Use of other manufacturer's names, part numbers, or trademarks are solely used for informational/identification purposes.



JTP #:	REPLACES #:	DESCRIPTION:	PRODUCT INFORMATION:	WORKS W/:
J19775	A06-75732-004	Headlamp, LH	Freightliner M2-106 & M2-112 Class	J21788, J21789, J19774
J19777	A06-75737-004	Headlamp, LH	Freightliner Columbia Class (2004 & Up)	J18645, J18646, J19778
J22598	K256-880-4	Headlamp, LH	Kenworth T600 & T800 Models	J22599
J22794	3596-015-C	Headlamp, LH	International ProStar Linehaul Conventionals International RH Series 12 Volt, 65 Watt	J22795
J19905	8082040	Headlamp, LH	Volvo VN1 Series	J19906
J21007	82329124	Headlamp, LH	Volvo VNL Models High Performance & Projection Style Lamp	J21006
J22594	A06-15605-002	Headlamp, LH	Freightliner FLD120 Class	J22595
J23583	K256-879-4	Headlamp, LH/RH	Kenworth T300 Models	J18660, J18661
J19900	3574-388-C	Headlamp, RH	International 4300 & 4400 Series Medium Duty International CE200 & CE300 Series School Bus Includes Wire Harness For Side Marker Lamp	J19899
J21411	3502-929-C	Headlamp, RH	International 9000, 9100, 9200, 9400 & 9900 Series Heavy Duty	J21408
J22595	A06-15605-003	Headlamp, RH	Freightliner FLD120 Class	J22594
J21006	82329127	Headlamp, RH	Volvo VN1 Series (1997-2002) Volvo VN2 Series (2003 & Up) High Performance & Projection Style Lamp	J21007
J19906	8082041	Headlamp, RH	Volvo VN1 Series	J19905
J22795	3596-016-C	Headlamp, RH	International ProStar Linehaul Conventionals International RH Series 12 Volt, 65 Watt	J22794
J22599	K256-880-4R	Headlamp, RH	Kenworth T600 & T800 Models	J22598
J19778	A06-75737-005	Headlamp, RH	Freightliner Columbia Class (2004 & Up)	J18645, J18646, J19777
J21989	A06-51907-007	Headlamp, RH	Freightliner Cascadia Class (2008-2013)	J21988
J19774	A06-75732-003	Headlamp, RH	Freightliner M2-106 & M2-112 Class	J21788, J21789, J19775
J25207	A06-32496-007	Headlamp, RH	Freightliner Columbia Class (1996-2004)	—
J23243	P54-1059-100R	Headlamp, RH	Kenworth T170, T270, T370 & T660 Models	J23242
J25968	TL 27601CB	Headlamp LED, LH	Freightliner Cascadia Class (2008 & Up) Slight Visual Difference from OE, Recommended to Replace in Pairs	—
J25969	TL 27600CB	Headlamp LED, RH	Freightliner Cascadia Class (2008 & Up) Slight Visual Difference from OE, Recommended to Replace in Pairs	—
J20435	2506-796-C	Lamp	—	—
J14063	TL/40002Y	Lamp	Multiple Freightliner Applications 4 Round w/ Grommet & Pigtail	—
JA864	TL/40202R3	Lamp	Multiple Freightliner Applications 4 Round Sealed w/ red lens	—
J24873	22141241	LED Headlamp, LH	Volvo VNL Models	—
J24874	22141268	LED Headlamp, RH	Volvo VNL Models	—
J25466	P54-6008-111	LED Side Marker Lamp	Peterbilt 330, 335, 337, 348, 357, 359, 377, 378, 379, 567, 579 & 587 Series Sold in Pairs	—
J24016	85107907	LED Sunvisor Marker Lamp w/ Harness	Volvo VN Models 12 Volt	—

All parts supplied are JOHN'S TRUCK PARTS. Use of other manufacturer's names, part numbers, or trademarks are solely used for informational/identification purposes.

# LAMPS & COMPONENTS



JTP #:	REPLACES #:	DESCRIPTION:	PRODUCT INFORMATION:	WORKS W/:
J14111	681-544-01-03	Lens	Multiple Freightliner Applications Includes Grommet & Molded Pigtail	—
J4782	465-458-C	Lamp Assembly w/ Bezel	—	—
J14067	1661-281-C	Tail Turn Lamp, LH	—	—
J9166	1661-282-C	Tail Turn Lamp, RH	Combination stop,tail,turn, back-up & reflex reflector Dual optic acrylic lens	—
J21414	2505-366-C	Turn Signal Lamp, LH	International 9000-9200, 9400 & 9900 Series Premium Conventionals	J21415
J22986	8080852	Turn Signal Lamp, LH	Volvo VNL & VNM Models (1996-2003) 12 Volt Small Unit	—
J22987	8080853	Turn Signal Lamp, RH	Volvo VNL & VNM Models (1996-2003) 12 Volt Small Unit	—
J21415	2505-369-C	Turn Signal Lamp, RH	International 9000-9200, 9400 & 9900 Series Premium Conventionals	J21414
J20056	A 681 544 04 03	Brake Lamp, LH	Freightliner Columbia. Century & FLD Class 1 Connector	J20057
J20057	A 681 544 05 03	Brake Lamp, RH	Freightliner Columbia. Century & FLD Class 2 Connector	J20056
JA644	1686-721-C	Headlamp, LH/RH	International 3800, 4700, 4800, 8100 & 8200 Series (1995-2004) International 3000 & 3800 Series School Bus (1997 & Up) Stainless Steel Retaining Ring; Galvanized & E Coated Bucket H6054 Bulb	—
J21858	A06-51912-002	LED Marker Lamp, Side	Freightliner Cascadia Class	—
J25763	A06-84737-000	Marker Lamp, LED	Freightliner Cascadia Class	—
J25652	11668932-12	Marker Lamp	12V, Off Road	—
J22728	3561-965-C	Marker Lamp Housing, LH	International 4100-4400 Series Medium Duty International CE200 & CE300 Series School Bus	J22729
J22729	3561-966-C	Marker Lamp Housing, RH	International 4100-4400 Series Medium Duty International CE200 & CE300 Series School Bus	J22728
J20646	A06-21643-000	Marker Lamp, Side	Freightliner Century Class (1996-2008)	—
J23333	20414610	Marker Lamp, Sunvisor	Volvo VN Series 12 Volt, DOT Approved	—
J22614	22-51942-000	Cab Roof LED Marker Lamp	Freightliner Cascadia Class	—
J22615	A06-58770-000	LED Turn Signal Lamp	Freightliner Cascadia Class	23-10900-028
J23334	21882502	Marker Lamp, Sunvisor	Volvo VN Models 12 Volt , Auxiliary	—
J25322	3529-900-C	Oval Cab Marker Lamp, LED	International 4300 & 4400 Series Medium Duty, 5600I, 5900I, 7300- 7600 Series Severe Duty, 9200 & 9900 premium conventionals, CE200 & 300 School Bus Series & Lonestar linehaul conventionals Amber lens	—

All parts supplied are JOHN'S TRUCK PARTS. Use of other manufacturer's names, part numbers, or trademarks are solely used for informational/identification purposes.



JTP #:	REPLACES #:	DESCRIPTION:	PRODUCT INFORMATION:	WORKS W/:
J22990	20499003	Hood Bracket, LH	Volvo VNL Models	J22989
J20663	A17-13787-002	Hood Bracket, LH	Freightliner Columbia Class	J20664
J20664	A17-13787-003	Hood Bracket, RH	Freightliner Columbia Class	J20663
J22989	20499004	Hood Bracket, RH	Volvo VNL Models	J22990
J23344	13-04164	Bushing Hood, Pivot	Kenworth W900 Models Peterbilt T379 Models	—
J20896	13-04154	Hood Pivot Bushing	Peterbilt 379 Models	—
J20541	L92-6000-0718	Cable Hood, Restraint	Peterbilt 357, 367, 375, 377, 378 & 379 Models (1987-2005)	—
J21094	25152850	Hood Cable	Mack CH Models With Axle Forward (1990-1995)	—
J21314	25171452	Hood Cable	Multiple Mack Applications	—
J21884	82601061	Hood Cable	Volvo VN & VNL Models Generation 2 (2005-2009)	J21109, J20832, J20833
J11940	A17-12081-000	Hood Cable	Freightliner FLD 120 Class (1990-1996) Freightliner FLC 112 Class (1989-1990) Freightliner Classic (2003-2005) International Thomas SAF-T-LINER FJ65 (1997-2007)	—
J11941	A17-12082-000	Hood Cable	Freightliner FLD 120 Class (1990-1996) Freightliner FLC 112 Class (1989-1990) Freightliner Classic (2003-2005) International Thomas SAF-T-LINER FJ65 (1997-2007)	—
J19997	A17-12082-002	Hood Cable	Freightliner FLD Class	—
J23899	20922589	Hood Cable	Volvo VN, VT & VNL Models	—
J20631	3551-734-C	Hood Safety Cable	International 3200-3300, FBC, BE200-300 & CE200-300 Series School Bus International 4000 Series Medium Duty	J21302, J18193, J18197
J20616	17-12434-000	Hood Catch	Freightliner FLD & FLD Classic Class	—
J18889	17-13788-000	Hood Catch	Freightliner Columbia Class	J18205
J18506	WJ96WCB	Hood Catch Kit	Military 2 1/2-Ton Models	—
J3061	491-668-C	Hood Latch Kit	International 4000, 8000, 9370 & 9670 Series	J21189
J22310	3805-331-C	Hood Extension, LH	International ProStar Linehaul Conventionals International RH Series	J22309
J22309	3805-332-C	Hood Extension, RH	International ProStar Linehaul Conventionals International RH Series	J22310
J13329	A17-10464-001	Hood Guide	Freightliner FLD120 Class	J18204
J2983	472-697-C	Hood Guide	International 4000 & S Series	—

All parts supplied are JOHN'S TRUCK PARTS. Use of other manufacturer's names, part numbers, or trademarks are solely used for informational/identification purposes.

# HOODS & COMPONENTS



JTP #:	REPLACES #:	DESCRIPTION:	PRODUCT INFORMATION:	WORKS W/:
J20567	AVA27800	Clip	—	—
J4921	472-698-C	Hood Bumper	International 4000 & S Series	J2983
J21204	L03-0001	Hood Hook	Peterbilt 357, 359, 367, 377-379, 388 & 389 Models (1987-2011) Kenworth W900, T600, T300 & T800 Models (1987-2011)	—
J18871	K179-528	Hood Mounting Pin	Kenworth T600, T800 & W900 Models	—
J24084	17-14100-001	Hood Panel Skirt	Freightliner M2-106 Class	—
J25433	13-04730L	Hood Pivot Assembly, LH	Peterbilt 379 Models	—
J25434	13-04730R	Hood Pivot Assembly, RH	Peterbilt 379 Models	—
J21319	L34-6021	Hood Pivot Bolt	Peterbilt 379 Models	—
J25435	23-15273	Hood Pivot Bolt Kit	Peterbilt 379 Models	—
J25562	L486026L	Hood Pivot Mount, LH	Peterbilt 379 Models	—
J25563	L486026R	Hood Pivot Mount, RH	Peterbilt 379 Models	—
J21822	13-04711	Hood Rest	Peterbilt 379 Models	—
J21189	777-937-C	Retainer	International 3000 & 3800 Series School Bus International 4200, 4300, 4400, 4700, 4800 & 4900 Series Medium Duty International 5500i, 5600i & 5900i Series Severe Duty International 7300-7700, 9200, 9400, 9800 & 9900 Series Premium Conventionals International ProStar Linehaul Conventionals International RH Series	J3061
J5588	500-270-C	Retainer, Hood Latch	—	—
JA797	LOR/J17700-5	Hood Hinge Bushing	Freightliner Century, Columbia & FLD Class	J18204, J18206
J24293	15-05717	Hold Down Battery Hook	Multiple Peterbilt Applications	—
J24006	A22-57932-001	Hold Down Clamp	Multiple Freightliner Applications	—
J18888	1699-930-C	Hood Hold Down Kit	International 9000 Series Heavy Duty	J18192, J18194, J18196, J18195
J21209	23-13857	Hood Hold Down Kit	Kenworth T300 (1987-2011), T600, T800 & W900 Models Peterbilt 357, 359, 367, 377-379, 388 & 389 Models (1987-2011)	J18436, J21106, J19088, J21108
JA287	JA287	Hood Latch Kit	International 7100, 8100-8300 Series International 4700, 4900 & S Series Medium Duty	J21302, J18193, J18197
J20611	17-14781-000	Bracket, Hood Latch	Freightliner FL & M2 Class	J18894, J19090, J19110
J5589	500-271-C	Catch, Hood Latch	—	—
J3136	500-269-C	Handle, Hood Latch	Multiple International Applications	—
J21821	3544-924-C	Hood Latch	International 4100-4400 Series Medium Duty International 7300-7700 Series Severe Duty International 8500 & Prostar Linehaul Conventionals International RH Series	J21302, J18193, J18197
J11605	3558-776-C	Hood Latch	International 4700, 4900 & 7100 Series Medium Duty International 8100-8300 Series Heavy Duty	—
J20526	A 680 880 01 60	Hood Latch	Freightliner FL60-80 & M2 Class	J18894, J19090, J19110
J19901	K147-107	Hood Latch	Kenworth T600A & W900B Models	J18436, J19088, J21108
J18892	L56-0001	Hood Latch	Peterbilt 357, 367, 377-379, 388 & 389 Models (1987-2011) Kenworth T600, W900, T300 & T800 Models	J18436, J19088, J21108
J25334	37-99-344	Hood Latch Kit	Kenworth T170, T270 & T370 Models Multiple Peterbilt Applications	—
J19253	17-12438-000	Hood Latch, Cowl	Freightliner FLD Class	—
J23331	25165476	Hood Latch, LH	Mack CH & CV Models (Late)	J23332

All parts supplied are JOHN'S TRUCK PARTS. Use of other manufacturer's names, part numbers, or trademarks are solely used for informational/identification purposes.

JTP #:	REPLACES #:	DESCRIPTION:	PRODUCT INFORMATION:	WORKS W/:
J25767	A17-12658-002	Hood Latch, LH	—	—
J21941	A17-15730-004	Hood Latch, LH	Freightliner Cascadia & Columbia Class	J21942, J19554
J18893	A17-13534-000	Hood Latch, LH	Freightliner Century Class	J23473, J18206
J19251	A17-15553-000	Hood Latch, LH	Freightliner Columbia Class	J19252, J18205
J13326	A17-12435-000	Hood Latch, LH	Freightliner FLD Class	J13327
J23780	37-41-295-60	Hood Latch, LH / RH	Kenworth T660 Model Mack CH, CHN, CXN, CV & RH Models Peterbilt 386 Model	—
J21109	20498998	Hood Latch, LH/RH	Volvo VN & VNL Models	J21884, J20832, J20833
J23332	25165475	Hood Latch, RH	Mack CH & CV Models (Late)	J23331
J13327	A17-12435-001	Hood Latch, RH	Freightliner FLD Class	J13326
J19252	A17-15553-001	Hood Latch, RH	Freightliner Columbia Class	J19251, J18205
J23473	A17-13534-001	Hood Latch, RH	Freightliner Century Class	J18893, J18206
J21942	A17-15730-005	Hood Latch, RH	Freightliner Cascadia & Columbia Class	J21941, J19554
J8043	499-523-C	Hood Latch, Rubber Strap	International 4700, 4900, 7100, 8100, 8300 & S Series Medium Duty	J21302, J18193, J18197
J25391	C2-33-21-3	Toolbox Hood Latch	Peterbilt 330, 335, 337, 348, 357, 359, 377, 378, 379, 567, 579 & 587 Series	—
J20832	20565618	Hood Lock, LH/RH*	Volvo Applications *LH: 2004 & Up *RH: 2004 & Before	J21884, J21109, J20833
J20833	20565619	Hood Lock, LH/RH*	Volvo Applications *LH: 2004 & Before *RH: 2004 & Up	J21884, J21109, J20832
J20780	20725387	Hood Shock	Volvo VNL Models	—
J22646	A17-14297-000	Hood Shock	Freightliner M2-106 Class	J19090, J19110
J20665	A17-19230-000	Hood Shock	Freightliner Cascadia Class	J19554, J18205
J24896	3501-427-C	Hood Shock	International 5900I & 7600 Series Severe Duty International 9100, 9200, 9400 & 9900 Series Premium Conventionals International ProStar Linehaul Conventionals International RH Series	—
J25571	82713432	Hood Shock	Mack GU Models	—
J20934	13-04638	Hood Spring	Peterbilt 357, 377 & 379 Models (1987-2008)	—
J21242	1675-762-C	Hood Spring	International 2500 Series Heavy Duty (January, 1998 & Up) International 3000 & 3800 Series School Bus (May, 1997 & Up) International 4700, 4800 & 4900 Series Medium Duty (May, 1997 & Up)	J18192, J18194, J18196, J18195
J20089	17-12069-001	Hood Spring	Freightliner FLD & Classic Class (1989-2005)	J18204
J21366	25158019	Hood Spring	Mack CH & CV Models	
J21122	3588-532-C	Hood Spring	International 9000 Series Premium Conventionals	J18192, J18194, J18196, J18195
J21313	598-574-C	Hood Spring	International 2500, 2600 & 5000 Series Severe Duty International 9100, 9200 & 9400 Series Premium Conventionals	J18192, J18194, J18196, J18195
J20948	K224-81	Hood Spring	Kenworth T600, T800 & W900 Models (1998-2006)	J18436, J21106, J19088, J21108
J20803	L71-1002	Hood Spring	Kenworth W900 Models (1999-2011)	—
J20959	L71-1004	Hood Spring	Kenworth W900 Models (1999-2011)	—
J19993	A17-12994-002	Hood Strap, 33.5	Freightliner Columbia Class	J18205
J19994	A17-12994-003	Hood Strap, 42	Freightliner Columbia & Cascadia Class	J19554

All parts supplied are JOHN'S TRUCK PARTS. Use of other manufacturer's names, part numbers, or trademarks are solely used for informational/identification purposes.



# HOODS & COMPONENTS



JTP #:	REPLACES #:	DESCRIPTION:	PRODUCT INFORMATION:	WORKS W/:
J23734	3577-047-C	Hood Support	International BE200, CE200 & CE300 Series School Bus	—
J23948	3559-239-C	Hood Support Guide	International 9200, 9400 & 9900 Premium Conventionals International 5500I, 5600I & 5900I Series Severe Duty	—
J19652	J19652	Hood	—	—
J19090	A17-15459-002	Hood, 39	Freightliner M2-106 Class (2003 & Up)	J20611, J20526, J22646
J23224	3707-879-C	Hood, 40	International 7600-7700 Series (2003-2007)	—
J18197	3537-837-C	Hood, 40	International 7300-7500 Series Medium Duty (2003-2007)	J20631, JA287, J11605, J8043, J21242
J18198	3887-254-C	Hood, 41	International 4300 Series Medium Duty (2002-2009)	—
J19897	25895875	Hood, 42.25	GMC Topkick, Kodiak, C5500, 6500, 7500 & 8500 Models (1995-2002)	—
J21322	K146-1175	Hood, 43	Kenworth T300 Models (1994-2009)	—
J19110	A17-16035-000	Hood, 44	Freightliner M2-112 Class (2004 & Up)	J20611, J20526, J22646
J18193	2023-778-C	Hood, 44.5	International 3800, 4600, 4700, 4900 Series Medium Duty (1989-2001)	J20631, JA287, J11605, J8043, J21242
J18894	A17-14774-009	Hood, 46.5	Freightliner FL50, 60, 70, 80 & 106 Class (1991 & Up)	J20611, J20526
J19554	A17-15340-004	Hood, 50	Freightliner Cascadia Class (2008 & Up)	J21941, J21942, J20665, J19994
J21193	25134067	Hood, 52	Mack CHN613 & CHU613 (2004 & Up) Mack CH613 SFA Models (1988-2004)	—
J23487	L2910081033	Hood, 53	Kenworth T800 Models (1996-2007)	—
J21351	25131924	Hood, 53.5	Mack CH613 Models (1988 & Up)	—
J21302	2010-717-C	Hood, 54	International 8200 & 8300 Series Medium Duty (1989-2001) International 2500 & 2600 Series Medium Duty (1989-1998)	J20631, JA287, J11605, J8043, J21242
J18196	3551-824-C	Hood, 54	International 9100I, 9200I Series Heavy Duty (1999 & Up)	J18888, J21122, J21313, J23948
J23286	A17-15092-002	Hood, 55	Freightliner Century Class 3rd Gen (2004 & Up)	—
J18206	—	Hood, 55	Freightliner Century Class 1st Gen (1997-2002)	JA797, J18893, J23473
J23825	A17-15365-000	Hood, 55	Freightliner Century Class 2nd Gen (2003-2004)	—
J18205	—	Hood, 55.5	Freightliner Columbia CL120 & FLC Class (2001 & Up)	J18889, J19251, J19252, J20665, J19993
J18360	—	Hood, 55.75	Volvo VNL Series 2nd Gen (1998-2002)	—
J23475	J23475	Hood, 57.5	Mack RD Models (1990 & Up)	—
J21192	25136569	Hood, 57.5	Mack RD Models (1995 & Up)	—
J19088	—	Hood, 59	Kenworth T600B Models (1990-1995)	J21209, J19901, J18892, J20948
J21108	—	Hood, 59	Kenworth T600 Models (1997 & Up)	J21209, J19901, J18892, J20948
J18436	K146-1306-00SPL	Hood, 59	Kenworth T600 Aero Models (1995 & Up)	J21209, J19901, J18892, J20948
J18192	3521-968-C	Hood, 59.5	International 9200 Series Heavy Duty (1997-1999)	J18888, J21122, J21313, J23948
J18195	3551-825-C	Hood, 60	International 9400I Series Heavy Duty (1999 & Up)	J18888, J21122, J21313

All parts supplied are JOHN'S TRUCK PARTS. Use of other manufacturer's names, part numbers, or trademarks are solely used for informational/identification purposes.

JTP #:	REPLACES #:	DESCRIPTION:	PRODUCT INFORMATION:	WORKS W/:
<b>J18204</b>	A17-12442-002	Hood, 60.5	Freightliner FLD120 SBA Class (1989 & Up)	J13329, JA797, J20089
<b>J18435</b>	K146-1312-110000	Hood, 60.5	Kenworth T800 Models (1987-2007)	—
<b>J21106</b>	L29-11771210000SPL	Hood, 61.5	Kenworth T800 Models (2008 & Up)	J21209, J20948
<b>J23522</b>	L29-1177-251000	Hood, 61.5	Kenworth T800 Models (2007 & Up)	—
<b>J22483</b>	L29-1248	Hood, 61.5	Kenworth T660 Models (2008 & Up)	—
<b>J19089</b>	L93-1000	Hood, 61.5	Kenworth T2000 Models (1999-2010)	—
<b>J23194</b>	K146-1052	Hood, 64	Kenworth T800 Models (1987-2004)	—
<b>J23523</b>	13-03553	Hood, 64	Peterbilt 379 Models (2006 & Before)	—
<b>J18194</b>	3521-969-C	Hood, 65.5	International 9400 Series Heavy Duty (1997-1999)	J18888, J21122, J21313, J23948
<b>J23520</b>	K146-1326	Hood, 66	Kenworth W900L Models (1994 & Up)	—
<b>J23521</b>	L29-010002	Hood, 66	Kenworth W900L Models (2002 & Up)	—

All parts supplied are JOHN'S TRUCK PARTS. Use of other manufacturer's names, part numbers, or trademarks are solely used for informational/identification purposes.

# MIRRORS & COMPONENTS



JTP #:	REPLACES #:	DESCRIPTION:	PRODUCT INFORMATION:	WORKS W/:
J21926	J21926	5 Convex Mirror	Universal Applications Center Mount L Bracket Included For Easy Replacement Convex Glass is Cushioned w/ Vinyl Gasket Available In Black Electrostatic-Painted Finish Mounts w/ A 5/16" Adjustable, Female Ball Stud Replaces Signal-Stat 7061/7062 Stainless Steel Finish	—
J21927	J21927	6 Convex Mirror	Universal Applications Center 5/16" - 24 Female Ball Stud Mount, Round Mirror Shape L Bracket Included For Easy Replacement Replaces Signal-Stat 7070/7071/7072 Stainless Steel Finish	—
J21937	J21937	7 x 16 West Coast Mirror	Universal; Commonly Used on GM, Ford, Sterling, Mack & International Includes Convex Spot Mirror, Amber Lens Marker Lamp & Hardware Stainless Steel Finish; Heated	—
J21936	J21936	7 x 16 West Coast Mirror	Universal; Commonly Used on Western Star, Peterbilt & Kenworth OEM Style-Flat Back; Includes Hardware Full 1/4 Glass is Cushioned w/ Vinyl Gasket Replaces Signal-Stat 7084/7085 Series Stainless Steel Finish	—
J21935	J21935	7 x 16 West Coast Mirror	Universal; Commonly Used on Western Star, Peterbilt & Kenworth Pyramid/Peak Back/ V-Back Style; Includes Hardware Silvered Mirror Glass Resists Pitting, Peeling & Corrosion Glass is Cushioned w/ Vinyl Ozone Resistant Gasket Mounts On 2 5/16" - 18 Bolts Replaces Signal-Stat 7800/7801/7803/7804/7810/7814 Stainless Steel Finish	—
J21932	J21932	7 X 16 West Coast Mirror	Universal; Commonly Used on Western Star, Peterbilt & Kenworth OEM Style-Flat Back; Includes Hardware & Amber Lens Marker Lamp Full 1/4 Glass is Cushioned w/ Vinyl Gasket Replaces Signal-Stat 7084/7085 Series. Polished Stainless Steel Finish; Heated	—
J21931	J21931	7 X 16 West Coast Mirror	Universal; Commonly Used on Western Star, Peterbilt & Kenworth OEM Style-Flat Back Full 1/4 Glass is Cushioned w/ Vinyl Gasket Replaces Signal-Stat 7084/7085 Series Polished Stainless Steel Finish; Heated	—
J20777	A22-59713-001	8 Convex Mirror, LH/ RH	Freightliner Columbia & M2 Class Heated	J20648

All parts supplied are JOHN'S TRUCK PARTS. Use of other manufacturer's names, part numbers, or trademarks are solely used for informational/identification purposes.

JTP #:	REPLACES #:	DESCRIPTION:	PRODUCT INFORMATION:	WORKS W/:
J21930	J21930	8.5 Convex Mirror	Universal Applications Center Mount; Bubble Center Includes Mounting Stud & Bolt Stainless Steel Finish	—
J21929	J21929	8.5 Convex Mirror	Universal Applications Center 5/16" Female Adjustable Ball Stud & Bolt Mount L Bracket Included For Easy Replacement Replaces Signal-Stat 7073/7074/7090 Stainless Steel Finish	—
J21928	J21928	8.5 Convex Mirror	Universal Applications Center 5/16" Female Adjustable Ball Stud & Bolt Mount L Bracket Included For Easy Replacement Replaces Signal-Stat 7073/7074/7090 Stainless Steel Finish	—
J23578	A22-60713-002	Complete Door Mirror Assembly, LH	Freightliner Cascadia Class (2008 & Up) Electric & Heated Includes Complete Mirror w/ Cover & Mounting Arm Black Finish	J23577
J23580	A22-60713-005	Complete Door Mirror Assembly, LH	Freightliner Cascadia Class (2008 & Up) Electric & Heated Includes Complete Mirror w/ Cover & Mounting Arm Chrome Finish	J23579
J23577	A22-60713-001	Complete Door Mirror Assembly, RH	Freightliner Cascadia Class (2008 & Up) Electric & Heated Includes Complete Mirror w/ Cover & Mounting Arm Black Finish	J23578
J23579	A22-60713-003	Complete Door Mirror Assembly, RH	Freightliner Cascadia Class (2008 & Up) Electric & Heated Includes Complete Mirror w/ Cover & Mounting Arm Chrome Finish	J23580
J22424	A22-66565-000	Complete Hood, Mirror Assembly, LH	Freightliner Cascadia Class Black Finish	J22423, J21680
J22423	A22-66565-001	Complete Hood, Mirror Assembly, RH	Freightliner Cascadia Class Black Finish	J22424, J21679
J21609	J21609	Convex Mirror	Kenworth T170, T370, T600, T660, T700 & T2000 Models Peterbilt 387 Series Available Separately	—
J22513	R59-1019-11	Door Mirror Cover, LH	Kenworth T170, T370, T600, T660, T700 & T2000 Models Peterbilt 387 Series Primed Finish	J22272, J22271, J22514, J20499, J20498
J22511	R59-1019-12	Door Mirror Cover, LH	Kenworth T170, T370, T600, T660, T700 & T2000 Models Peterbilt 387 Series Chrome Finish	J22274, J22273, J22512, J20499, J20498
J22514	R59-1010-11	Door Mirror Cover, RH	Kenworth T170, T370, T600, T660, T700 & T2000 Models Peterbilt 387 Series Primed Finish	J22272, J22271, J22513, J20499, J20498
J22512	R59-1010-12	Door Mirror Cover, RH	Kenworth T2000 & T700 Models Peterbilt 387 Series Chrome Finish	J22274, J22273, J22511, J20499, J20498
J22271	J22271	Door Mirror, LH	Kenworth T2000 & T700 Models Peterbilt 387 Series Heated, Powered & Pre-wired w/ Harness Available as an Assembly or Most Parts Available Separately	J22272, J22514, J22513, J20499, J20498

All parts supplied are JOHN'S TRUCK PARTS. Use of other manufacturer's names, part numbers, or trademarks are solely used for informational/identification purposes.

JTP #:	REPLACES #:	DESCRIPTION:	PRODUCT INFORMATION:	WORKS W/:
J22273	J22273	Door Mirror, LH	Kenworth T2000 & T700 Models Peterbilt 387 Series Heated, Powered & Pre-wired w/ Harness Available as an Assembly or Most Parts Available Separately Chrome Finish	J22274, J20499, J20498, J20511
J22272	J22272	Door Mirror, RH	Kenworth T2000 & T700 Models Peterbilt 387 Series Heated, Powered & Pre-wired w/ Harness Available as an Assembly or Most Parts Available Separately	J22271, J22514, J22513, J20499, J20498
J22274	J22274	Door Mirror, RH	Kenworth T2000 & T700 Models Peterbilt 387 Series Heated, Powered & Pre-wired w/ Harness Available as an Assembly or Most Parts Available Separately Chrome Finish	J22273, J22512, J20499, J20498, J20511
J21933	J21933	Fender Tripod	Universal Applications Adjustable 21 - 32.75 Tripod w/ 8.5 Convex Mirror Adjustable Safety Mirror & Bracket Stainless Steel Finish	—
J20499	M015399	Frame & Small Mirror	Kenworth T170, T370, T600, T660, T700 & T2000 Models Heated Small mirror J21609 available separately	J21609, J22194, J22193, J21648, J21647
J21668	TL/28717	Hood Mirror	Freightliner Cascadia Class Replacement Mirror for Hood Mirror Assembly Non-Heated, Reversible For Left & Right Sides	J22424, J22423, J21680, J21679
J24991	82299364	Hood Mirror, LH	Volvo VNL Models (2003 & Up) Black Finish Includes: 1 Mounting Plate & 4 Lock Nuts	—
J24989	82361058	Hood Mirror, LH	Volvo VNL Models (2003 & Up) Chrome Finish Includes: 1 Mounting Plate & 4 Lock Nuts	—
J24988	82361059	Hood Mirror, RH	Volvo VNL Models (2003 & Up) Chrome Finish Includes: 1 Mounting Plate & 4 Lock Nuts	—
J24990	82334903	Hood Mirror, RH	Volvo VNL Models (2003 & Up) Black Finish Includes: 1 Mounting Plate & 4 Lock Nuts	—
J20498	M015400	Large Mirror	Kenworth T170, T370, T600, T660, T700 & T2000 Models Heated	J22194, J22193, J21648, J21647
J24205	TL 28716A	Main Mirror	Freightliner Cascadia Class (2008-2014) Heated Upper Door Mirror	—
J20648	A22-58516-001	Mirror	Freightliner Columbia & M2 Class Heated Mirror, Located Above J20520 Dimensions: 8 x 17	—
J25848	TL 28717A	Mirror	Freightliner Cascadia Class Heated, Lower Door Mirror	—
J19183	10950861	Mirror Arm	Military M151A2 Models Qty: 2	—
J20500	R59-6042	Mirror Arm Assembly, LH	Kenworth T700 & T2000 Models Peterbilt 387 Series Powered w/ Motor & Pre-Wired w/ Harness Does not include Mirror or Shell	J22515
J22515	R59-1016-1R	Mirror Arm Assembly, RH	Kenworth T2000 & T700 Models Powered w/ Motor & Pre-wired w/ Harness	J20500
J21647	J21647	Mirror Assembly, LH	Kenworth T170, T370, T600 & T660 Models Heated, Powered & Pre-wired w/ Harness Available As An Assembly Or Most Parts Are Sold Separately	J20499, J20498, J21648, J20505, J20504

All parts supplied are JOHN'S TRUCK PARTS. Use of other manufacturer's names, part numbers, or trademarks are solely used for informational/identification purposes.



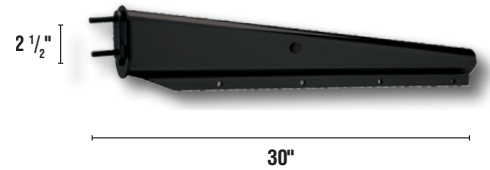
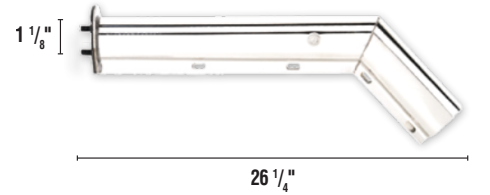
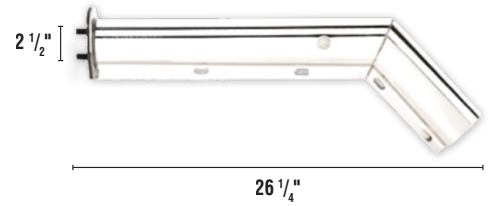
JTP #:	REPLACES #:	DESCRIPTION:	PRODUCT INFORMATION:	WORKS W/:
J22194	J22194	Mirror Assembly, LH	Kenworth T170, T370, T600 & T660 Models Heated, Powered & Pre-wired w/ Harness Sold As An Assembly Or Most Parts Available Separately	J20499, J20498, J22193, J20497, J20495
J25892	J25892	Mirror Assembly, LH	International 9100, 9200, 9400 & 9900 Premium Conventionals International 5500I, 5600I & 5900I Severe Service Conventionals Motorized & Heated	—
J21652	J21652	Mirror Assembly, LH	Freightliner M2 Class Includes: Mirror, Bracket & Hardware Black Finish	J21651
J21650	J21650	Mirror Assembly, LH	Freightliner M2 Class Heated & Power Includes: Mirror, Bracket & Hardware	J21649
J21649	J21649	Mirror Assembly, RH	Freightliner M2 Class Includes: Mirror & Bracket	J21650
J21651	J21651	Mirror Assembly, RH	Freightliner M2 Class Includes: Mirror, Bracket & Hardware Black Finish	J21652
J25891	J25891	Mirror Assembly, RH	International 9100, 9200, 9400 & 9900 Premium Conventionals International 5500I, 5600I & 5900I Severe Service Conventionals Motorized & Heated	—
J22193	J22193	Mirror Assembly, RH	Kenworth T170, T370, T600 & T660 Models Heated, Powered & Pre-wired w/ Harness Sold As An Assembly Or Most Parts Available Separately	J20499, J20498, J22194, J20497, J20495
J21648	J21648	Mirror Assembly, RH	Kenworth T170, T370, T600 & T660 Models Heated, Powered & Pre-wired w/ Harness Available As An Assembly Or Most Parts Are Sold Separately	J20499, J20498, J21647, J20505, J20504
J23822	25174967	Mirror Bracket Cover	Multiple Mack Applications	—
J24028	R22-6123-100	Mirror Cover, LH	Kenworth T680 & T880 Models Black Finish	—
J24030	R22-6123-300	Mirror Cover, LH	Kenworth T680 & T880 Models Chrome Finish	—
J24029	R22-6124-100	Mirror Cover, RH	Kenworth T680 & T880 Models Black Finish	—
J24031	R22-6124-300	Mirror Cover, RH	Kenworth T680 & T880 Models Chrome Finish	—
J13800	12300829	Mirror Head	Military M35A2, M35A3, M809 & M939 Models 8 Round, Convex	—
J20497	R59-1010-22	Mirror Head Cover, LH	Kenworth T170, T370, T600 & T660 Models	J20497, J20495
J20504	R59-1019-21	Mirror Head Cover, LH	Kenworth T170, T370, T600 & T660 Models	J21648, J21647
J20495	R59-1019-22	Mirror Head Cover, RH	Kenworth T170, T370, T600 & T660 Models	J20497, J20495
J20505	R59-1010-21	Mirror Head Cover, RH	Kenworth T170, T370, T600 & T660 Models	J21648, J21647
J21887	M015376	Mirror Motor Assembly	Kenworth T170, T370, T600 & T800 Models 4-Way Actuator Motor	J22194, J22193, J21648, J21647
J21197	18-02123	Mirror Support Arm	Peterbilt 357 & 375-379 Conventional Style Series Works w/ Mounting West Cost Mirrors Conventional Heavy Duty Safety Yoke; Mirror Extends Out From Brackets	—
J21679	J21679	Mirror, LH	Freightliner Cascadia Class	J22423, J21680
J20650	A22-59615-016	Mirror, LH	Freightliner M2-106 Class Includes: Mirror, Bracket & Hardware Chrome Finish; Heated w/ Power	J20649

All parts supplied are JOHN'S TRUCK PARTS. Use of other manufacturer's names, part numbers, or trademarks are solely used for informational/identification purposes.

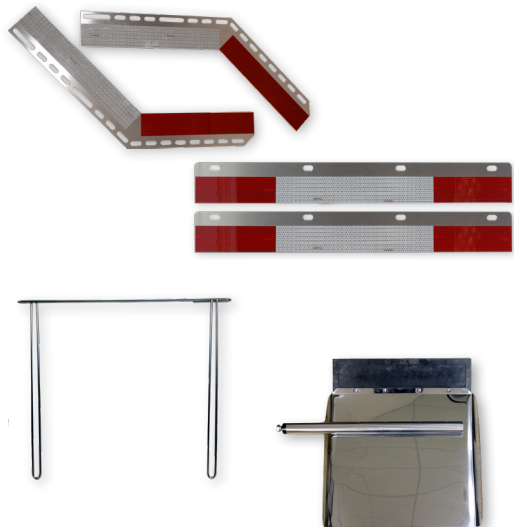
JTP #:	REPLACES #:	DESCRIPTION:	PRODUCT INFORMATION:	WORKS W/:
J21680	J21680	Mirror, RH	Freightliner Cascadia Class	J22424, J21679
J20649	A22-59615-015	Mirror, RH	Freightliner M2-106 Class Includes: Mirror, Bracket & Hardware Chrome Finish; Heated w/ Power	J20650
J21934	J21934	Pod Mount Mirror	Universal Applications Includes Backing Plate, Gasket, Hardware, Single Arm & 8.5 Convex Mirror Stainless Steel Finish	—

All parts supplied are JOHN'S TRUCK PARTS. Use of other manufacturer's names, part numbers, or trademarks are solely used for informational/identification purposes.

JTP #:	REPLACES #:	DESCRIPTION:	PRODUCT INFORMATION:
J22277	647-SL	Mudflap Hanger 2 1/2" Angled	Includes 2 Hangers Spring Loaded Chrome Finish
J22278	647JSL	Mudflap Hanger 2 1/2" Angled	Includes 2 Hangers Spring Loaded Stainless Finish
J22280	648-SL	Mudflap Hanger 1 1/8" Angled	Includes 2 Hangers Chrome Finish
J22281	648JSL	Mudflap Hanger 1 1/8" Angled	Includes 2 Hangers Stainless Finish
J22279	648B-SL	Mudflap Hanger 1 1/8" Angled	Includes 2 Hangers Black Finish
J22282	646-SL	Mudflap Hanger 2 1/2" Straight	Includes 2 Hangers Spring Loaded Chrome Finish
J22283	646JSL	Mudflap Hanger 2 1/2" Straight	Includes 2 Hangers Spring Loaded Stainless Finish
J22284	646B-SL	Mudflap Hanger 2 1/2" Straight	Includes 2 Hangers Spring Loaded Black Finish
J22675	649-SL	Mudflap Hanger 1 1/8" Straight	Includes 2 Hangers Chrome Finish
J22676	649JSL	Mudflap Hanger 1 1/8" Straight	Includes 2 Hangers Stainless Finish
J22674	649B-SL	Mudflap Hanger 1 1/8" Straight	Includes 2 Hangers Black Finish



JTP #:	REPLACES #:	DESCRIPTION:	PRODUCT INFORMATION:
J23783	RT35	Angled Conspicuity Strips	Multiple Kenworth Applications Reflective Strip For Hangers DOT Approved
J23829	RT25	Straight Bar Conspicuity Strips	Reflective Strip For Hangers DOT Approved
J22285	742-S	24" Quarter Fender Set	Includes Mounting Pins & Bolts Stainless Steel Includes Left & Right Fenders
J22382	FLT1900KIT	24" Quarter Fender Set	Includes Clamp High Impact Plastic Includes Left & Right Fenders
J22276	640	Anti-Sail Hold Down	—



All parts supplied are JOHN'S TRUCK PARTS. Use of other manufacturer's names, part numbers, or trademarks are solely used for informational/identification purposes.

# MUDFLAP HANGERS



JTP #:	REPLACES:	DESCRIPTION:	PRODUCT INFORMATION:
J25446	A25L/R	Straight Mud Flap Hanger Set	Length: 29.75" 0.640 Square Steel, Shot Peened & Painted Includes 2 Hangers w/ Mounting Brackets
J25447	B25	Straight Mud Flap Hanger Kit	Length: 29.75" 0.640 Square Steel, Shot Peened & Painted Includes Mounting Brackets, Mud Flap Hangers, Adjustable Flap Clips, Cotter Pins & Mounting Hardware For Flap & Bracket
J25448	A35L/R	Angled Mud Flap Hanger Set	Length: 27.42" 0.640 Square Bar Shot Peened & Painted Includes 2 Hangers w/ Mounting Brackets
J25449	B23	Straight Mud Flap Hanger Kit	Length: 29.75" 0.640 Square Steel, Shot Peened & Painted Interchangeable Hangers & Brackets Includes Mounting Brackets, Mud Flap Hangers, Adjustable Flap Clips, Cotter Pins & Mounting Hardware For Flap & Bracket
J25450	B33	Angled Mud Flap Hanger Set	Length: 29.64" 0.640 Square Steel, Shot Peened & Painted Spring Loaded Includes Mounting Brackets, Mud Flap Hangers, Adjustable Flap Clips, Cotter Pins & Mounting Hardware For Flap & Bracket

All parts supplied are JOHN'S TRUCK PARTS. Use of other manufacturer's names, part numbers, or trademarks are solely used for informational/identification purposes.



JTP #:	REPLACES #:	DESCRIPTION:	PRODUCT INFORMATION:	WORKS W/:
J21987	20509270	Window Crank Handle	Volvo VN & VNL Models	—
J22715	25127752	Window Crank Handle	Mack CH, CV & CX Models Black Finish	—
J18895	A18-18557-002	Window Crank Handle	Freightliner FLD Class	—
J22725	600228S	Windshield Washer Pump	Multiple Kenworth Applications Includes Grommets (012-513 & 012-512)	—
J22369	A22-71173-000	Windshield Washer Pump	Multiple Freightliner Applications	—
J23436	T4695001	Windshield Washer Pump	Multiple Peterbilt & Kenworth Applications Includes Grommet & Washer Bottle	J20527, J20101
J9409	1686-704-C	Window Regulator, LH	International S & 4000 Series Medium Duty (1991 & Up)	J9410
J20667	A18-52044-000	Window Regulator, LH	Freightliner Century & Columbia Class Freightliner CST112, C112, CST120 & C120 Class Freightliner Argosy Class (1997-2011)	J20881
J22184	R21-1005	Window Regulator, LH	Kenworth T600, T800 & W900 Models (2004-2011) Plug & Play	J22183
J22186	R21-6011	Window Regulator, LH	Peterbilt 357, 365, 367, 378, 379, 388 & 389 Models (2007-2017) Plug & Play	J22185
J22185	R21-6011R	Window Regulator, RH	Peterbilt 357, 365, 367, 378, 379, 388 & 389 Models (2007-2017) Plug & Play	J22186
J22183	R21-1005R	Window Regulator, RH	Kenworth T600, T800 & W900 Models (2004-2011) Plug & Play	J22184
J20881	A18-52044-001	Window Regulator, RH	Freightliner Century & Columbia Class Freightliner CST112, C112, CST120 & C120 Class Freightliner Argosy Class (1997-2011)	J20667
J9410	1686-705-C	Window Regulator, RH	International S & 4000 Series Medium Duty (1991 & Up)	J9409
J25831	R21-6013R	Window Regulator, RH	Kenworth T2000 Models (2003-2010) Peterbilt 386 Series (2006-2009) Peterbilt 387 Series (2006-2010)	—
J24217	3554-252-C	Windshield	International 4000, 4300 & 4400 Series Medium Duty (2001-2005) International 7000 Series Severe Duty International 8000 & Prostar Series Linehaul Conventionals International RH Series Dimensions: 26.77" x 80.71" x 37.40"	—
J24218	A18-45300-003	Windshield	Freightliner M2 Business Class (2003 & Up) Dimensions: 680mm x 2050mm x 950mm	—

All parts supplied are JOHN'S TRUCK PARTS. Use of other manufacturer's names, part numbers, or trademarks are solely used for informational/identification purposes.



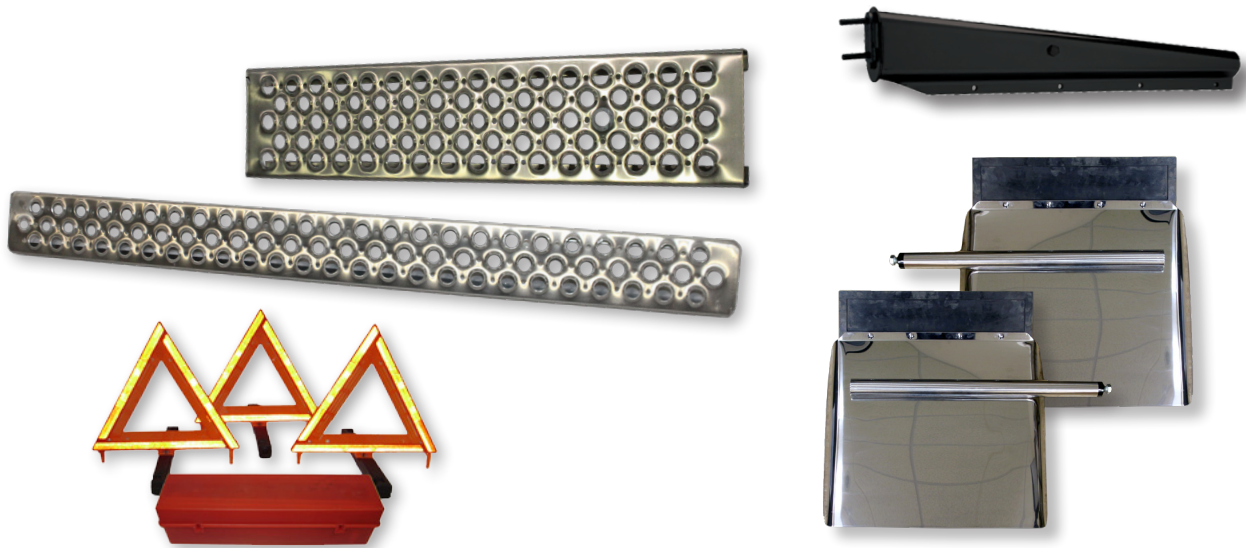
JTP #:	REPLACES #:	DESCRIPTION:	PRODUCT INFORMATION:	WORKS W/:
J24216	18-46741-002	Windshield Glass	Freightliner Columbia & Coronado Class (1996 & Up) Dimensions: 680mm x 2050mm x 900mm	—
J24221	3714-740-C	Windshield Glass	International 5000I, 9000I, 9200I, 9400I, 9900I, 9900IX, 9200-9400 & 9900 Premium Conventionals Dimensions: 680mm x 2000mm x 800mm	—
J24219	18-32581-000	Windshield Glass, LH	Freightliner Century, Columbia & Coronado Class (1996 & Up) Dimensions: 680mm x 1100mm x 850mm	—
J24220	18-32581-001	Windshield Glass, RH	Freightliner Century, Columbia & Coronado Class (1996 & Up) Dimensions: 680mm x 1100mm x 850mm	—
J24212	18-59152-001	Windshield Glass, RH	Freightliner Cascadia Class (2008) Dimensions: 680mm x 1100mm x 850mm	—
J10407	3539-699-C	Windshield Wiper Motor	International 2500 & 2600 Series Severe Duty (1998 & Up) International 3000 Series School Bus (1997 & Up) International 4700-4900 Series Medium Duty (1997 & Up) International 8100 Series Heavy duty (1998 & Up)	—
J19896	AMG-FR-DW-1732	Windshield, LH	—	
J24211	18-59152-000	Windshield, LH	Freightliner Cascadia Class (2008) Dimensions: 680mm x 1100mm x 850mm	—
J19443	4188-30-BWS	Wiper Arm	Freightliner FLD Class Length: 18.875"	J21053, J13253
J23415	85111394	Wiper Arm, LH/RH	Volvo VN2 Series (2007 & Up)	—
J19444	A22-47433-002	Wiper Arm	Freightliner Century Class Length: 19.750"	—
J19665	A22-51969-000	Wiper Arm	Freightliner Columbia Class	J20609
J22410	A22-66578-001	Wiper Arm	Freightliner Cascadia Class	J22412
J19903	R23-6002	Wiper Arm, LH/RH	Peterbilt 379 Models	—
J21052	3980443	Wiper Arm Assembly	Volvo VN1 & VN2 Series (2007 & Before)	J21940
J22692	A22-61651-000	Wiper Arm Assembly	Freightliner Sterling Class	—
J21201	3527-221-C	Wiper Arm, LH	International 5000, 5000i, 5600i & 5900i Series Severe Duty International 9100, 9200, 9400 & 9900 Series Premium Conventionals International 9800 Series Premium Cabovers	—
J21688	R23-1029-12	Wiper Arm, LH	Kenworth T660 & T800 Models	J21689
J21689	R23-1029-13	Wiper Arm, RH	Kenworth T660 & T800 Models	J21688
J20605	GS3383	Wiper Assembly, LH	Kenworth T600 Models	J20604
J20604	GS3382	Wiper Assembly, RH	Kenworth T600 Models	J20605
J14004	1696-499-C	Washer Fluid Nozzle	International 5000, 5000I, 5600, 5800 & 5900 Series Medium Duty International 9100, 9200, 9400 & 9900 Series Heavy Duty	J21199
J21761	446883001	Washer Pump	International 3000FE, 3000RE, BE200, CE200, CE300, FE300 & RE300 Series School Bus International 5500i, 5600i & 5900i Series Severe Duty International 9200, 9400 & 9900 Series Premium Conventionals	—
J21940	1070123	Wiper Arm Nozzle	Volvo VN1 & VN2 Series Includes 4mm Hose & Fitting	J21052
J21199	2588-068-C	Wiper Arm Nozzle	International 5000, 5000i, 5600i & 5900i Series Severe Duty International 9100, 9200, 9400 & 9900 Series Premium Conventionals International 9800 Series Premium Cabovers	J14004
J21053	SPR GW 254	Wiper Arm Nozzle	Freightliner FLD Class	J19443, J13253
J20609	TRI F88171 405	Wiper Arm Nozzle	Freightliner Columbia Class	J19665
J22412	TRI F88171 801	Wiper Arm Nozzle	Freightliner Cascadia Class	J22410

All parts supplied are JOHN'S TRUCK PARTS. Use of other manufacturer's names, part numbers, or trademarks are solely used for informational/identification purposes.

JTP #:	REPLACES #:	DESCRIPTION:	PRODUCT INFORMATION:	WORKS W/:
J22411	2504-705-C	Wiper Arm Nozzle Kit	International 4100-4400 Series Medium Duty International BE200, CE200 & CE300 Series School Bus International ProStar & LoneStar Linehaul Conventionals International RH Series	—
J22549	06-46159-001	Wiper Control	Freightliner Columbia & Coronado Class	—
J7873	1653-421-C	Wiper Control Valve	Ports: 1/8 NPT Knob Not Included	—
J20101	066011A	Wiper Fluid Pump	Peterbilt 370 Models (1986 & Up)	J23436, J20527
J20527	W612-1	Wiper Nozzle	Peterbilt 330, 335 & 370 Conventionals	J23436, J20101
JC297	63-QT-310	Wiper Motor	Mack RD Models Includes Bracket	—
J13253	6685540M025WJ	Wiper Motor	Freightliner FLD Class	—
J26058	85122759	Wiper Motor	Volvo VN & VNL Models Motor #: E-108-009 Assembly #: E-008-149 Manufacturing #: 21000862	—

All parts supplied are JOHN'S TRUCK PARTS. Use of other manufacturer's names, part numbers, or trademarks are solely used for informational/identification purposes.

# ADDITIONAL COMPONENTS



JTP #:	REPLACES #:	DESCRIPTION:	PRODUCT INFORMATION:
J21116	K097-2704	Battery/Tool Box Cover	Kenworth T800 Models Diamond Plate Cover W/ Upper Step
J21117	N22-1025-1	Battery/Tool Box Cover	Kenworth T800 Models Diamond Plate Cover W/ Upper Step, & Lock & Key Dimensions: 34" x 14.5" X 17"
J23826	20500764	Deck Plate	Volvo VN & VNL Models Steel Catwalk Dimensions: 42" x 19 3/4"
J21114	K229-1169-5	Step	Multiple Kenworth Applications Universal Use on 120 Gallon Tanks Dimensions: 53.5" x 5" Aluminum
J21115	K229-1209-8	Step	Multiple Kenworth Applications Dimensions: 34" x 9.5" Aluminum
J22286	1301	Air Cleaner	Includes Housing, 2 Mounting Straps & Mounting Plate Held Together W/ Long Bolt Through Middle of Housing 15" Vortex Style 7" Air Filter Outlet Diameter 304 Stainless Steel Finish
J25107	J25107	Back Up Alarm	Universal Applications Hella Design 110 Decibels; 12 or 24 Volt SAE J994 Certified
J5059	20 TON	Bottle Jack	Universal Applications 20 Ton Max Lift Height: 15 Glide Action Pressure Pump Safe Ratcheting Heads
J16944	30 TON	Bottle Jack	Kenworth T800 Models 30 Ton Max Lift Height: 18 Lifting Height: 7 Glide Action Pressure Pump Safe Ratcheting Heads
J21379	5453950	Cowl Seal	Military Jeep Models (1976-1986)
J21373	01-45151M000	Crossmember	Peterbilt 379 Series Aluminum Design

All parts supplied are JOHN'S TRUCK PARTS. Use of other manufacturer's names, part numbers, or trademarks are solely used for informational/identification purposes.

JTP #:	REPLACES #:	DESCRIPTION:	PRODUCT INFORMATION:
J23526	8076304	Deck Plate Clamp	Volvo VN Models (2004 & Up)
J22108	K031-371	Deflector, LH Roof Side	Kenworth T600 & T800 Models
J22109	K031-371R	Deflector, RH Roof Side	Kenworth T600 & T800 Models
J24926	J24926	Document Holder	Universal Applications Dimensions: 8.5" x 13" x 1.5" Aluminum
J24925	J24925	Document Holder	Includes Twist Lock Lid Length: 9" Plastic
J24953	J24953	Document Holder	Tube Style w/ Bracket Dimensions: 5.86" x 5.22" x 1.85" Length: 9 Aluminum
J23946	3515-345-C	Front Cab Mount Insulator	International 5500I, 5600I & 5900I Series Severe Duty International 9200, 9400 & 9900 Series Premium Conventionals
J25077	11-02331-000	Fuel Tank Strap Liner	Multiple Peterbilt Applications 100' Roll/Carton, w/o Glue
J21018	1824-946-C	Hand Primer Pump	International CE200, CE300, 3000, FE, IC & RE Series School Bus International 3600 & 3800 Series School Bus (May, 1997 & Up) International 4300-4900 Series Medium Duty International 2500, 2600, 5000, 5500i & 5600i Series Severe Duty
J20856	A22-63159-041	Ignition Cylinder Lock Set	—
J25590	8397917	Lock Rod	Volvo VN & VNL Models Tensioning Screw Works W/ Battery Box
J15593	2032-580-C	Luggage Box Cable	Multiple International Applications
J19597	681-291-0082	Pedal Pad	Freightliner Century & M2 Class
J3204	286-655-C	Shift Boot	Protects Shift Linkage From Dirt & Debris International 4000 & S Series Medium Duty
J18856	HUN 68D885	Shift Boot	Multiple Freightliner Applications
J22756	K042-79	Shift Boot	Kenworth W & T Series (1999-2011) Square Top
J23203	K042-80	Shift Boot	Multiple Kenworth Applications
J23374	K042-70-2	Shift Boot, 7.25"	Multiple Kenworth Applications (1999-2011)
J17265	3555-029-C	Shift Cable	Multiple International Applications Length: 91"
J25715	3539-136-C	Shift Cable Pivot	—
J25751	84720518	Side Air Deflector Bracket Support	Volvo VN & VNL Models Steel
J21114	K229-1169-5	Step	Multiple Kenworth Applications Universal Use on 120 Gallon Tanks
J21115	K229-1209-8	Step	Multiple Kenworth Applications
J24861	20447492	Strut, Air Deflector, LH	Volvo VN Models Fairing Support
J24862	20447493	Strut, Air Deflector, RH	Volvo VN Models Fairing Support

All parts supplied are JOHN'S TRUCK PARTS. Use of other manufacturer's names, part numbers, or trademarks are solely used for informational/identification purposes.

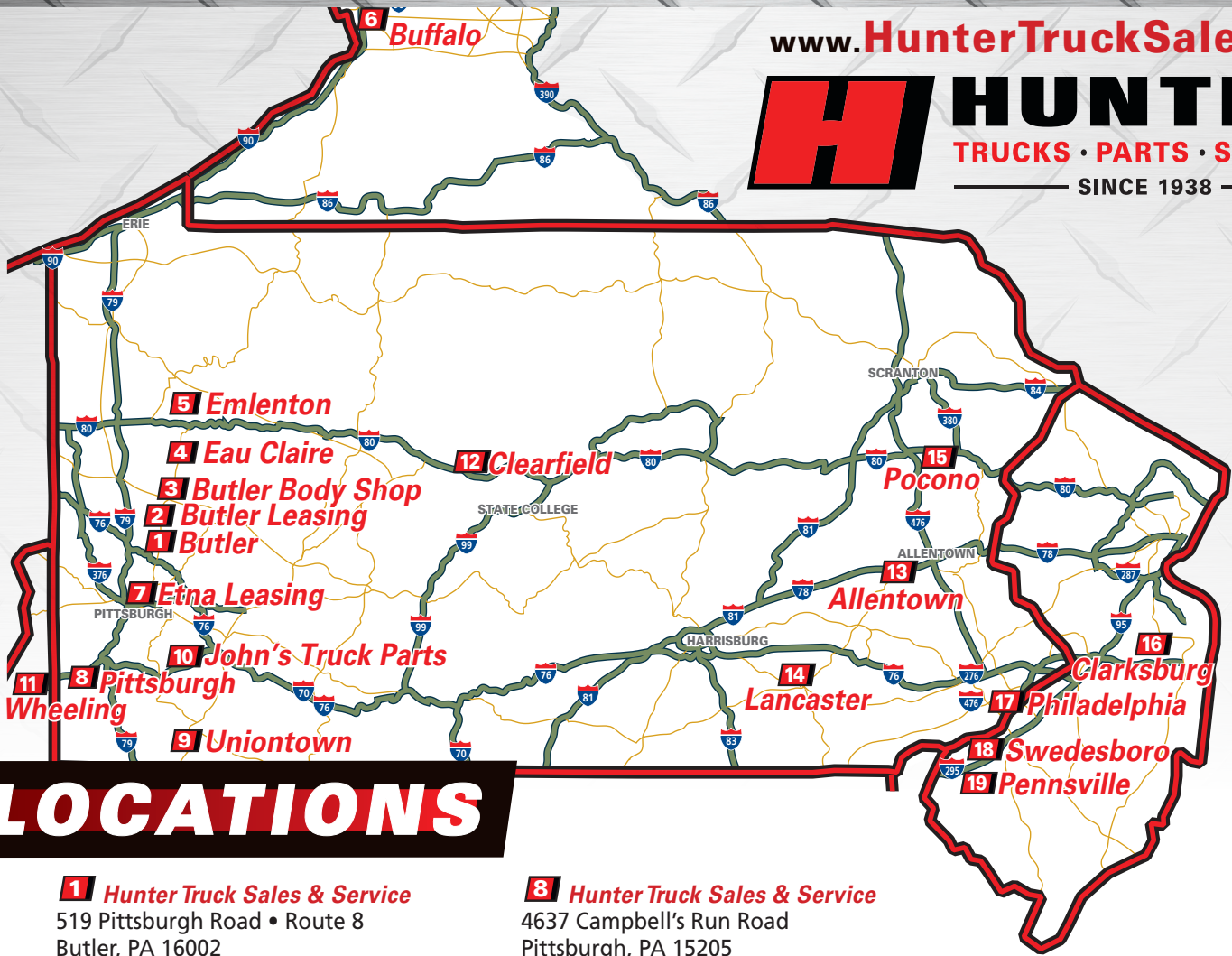
# ADDITIONAL COMPONENTS



JTP #:	REPLACES #:	DESCRIPTION:	PRODUCT INFORMATION:
JC686	JC686	Tailgate Lock Kit	Includes Cylinder w/ Clevis Assembly Push-Pull Valve & D.O.T. Approved Tubing & Fittings
J25403	11-02331-000-7	Tank Strap Liner	Peterbilt 330, 335, 337, 348, 357, 359, 377, 378, 379, 567, 579 & 587 Series 7' Piece
J18223	J18223	Warning Triangle Kit	M Series 3 Collapsible Reflective Triangles In Compact, 1 Piece Storage Box
J22678	MW1273BK	Wheel Hub Cover	5 Notch, Conmet Design Chrome Over Steel Works W/ 8-23/32 Hub, 7/16 Lip Height: 2.250
J22679	MW1285BK	Wheel Hub Cover	5 Notch, Conmet Design Chrome Over Steel Works W/ 8-23/32 Hub, 7/16 Lip Height: 2.250
J23789	RK-10605	Bracket Pin & Cushion Kit	Works W/ Holland XA-311, XA-331 & XA-351 Series 5th Wheels Includes (2) Bracket Pins XE-06356-P, (2) 1/2-20 Locknuts XB-T-69-A, (2) 1/2-20 X 1/4 Hex Head Cap Screws XB-C-95, (4) Rubber Bushings XB-10605
J22939	K066-436	Bushing Assembly Side Skirt	Multiple Kenworth Applications
J19980	16-15215-000	Rubber Bumper	Multiple Freightliner Applications Attached To Body Frame To Absorb Axle Vibration
J26154	3791-174-C	Air Horn	International 4100, 4200, 4300, 4400 Series Medium Duty International 7300, 7400, 7500, 7600, 7700 Series Severe Duty International 9200, 9400 & 9900 Premium Conventionals International 9800 Cabovers 12 Volt, Black
J13884	1600	Dual Horn Assembly	
J18570	3523-182-C	Electric Horn w/ Bracket	International 9200, 9400 & 9900 Series Heavy Duty
J19108	411949UPS	Electric Horn	—
J4730	411-948-C	Horn	—
J4731	411-949-C	Horn	—
J22414	N22-1030-1	Battery/Tool Box Cover	Kenworth W900 Model Diamond Plate Finish
J22244	A22-57757-120	Step Assembly	Freightliner Cascadia, Century, Columbia, Coronado & FLD Class Works W/ 120 Gallon Fuel Tank, Chassis Mounted
J22245	A22-57757-150	Step Assembly	Freightliner Cascadia, Century, Columbia, Coronado, M2 Works W/ 150 Gallon Fuel Tank, Chassis Mounted
J22564	A22-33062-006	Step Support	Freightliner M2 Class
J23074	J23074	Tool Box	Black Powder Coating
J23073	J23073	Tool Box	Black Powder Coating T-Handle Latch
J23072	J23072	Tool Box	Black Powder Coating
J23071	J23071	Tool Box	Aluminum Diamond Thread Aluminum 2 T-Handle Latches
J23070	J23070	Tool Box	Aluminum Diamond Thread Aluminum T-Handle Latch
J23069	J23069	Tool Box	Polished Diamond Tread Aluminum
J21048	J21048	Tool Box/Battery Box	International 9400 Series Heavy Duty 2' Wide, 2' Deep, 1.5' To Bottom Of Box & 2' To Bottom Of Lower Step Includes Diamond Plate Cover, Upper & Lower Steps, & Lock & Key

All parts supplied are JOHN'S TRUCK PARTS. Use of other manufacturer's names, part numbers, or trademarks are solely used for informational/identification purposes.





# LOCATIONS

**1** **Hunter Truck Sales & Service**  
519 Pittsburgh Road • Route 8  
Butler, PA 16002  
724-586-7744

**2** **Hunter Idealease**  
495 Pittsburgh Road • Route 8  
Butler, PA 16002  
724-282-0641

**3** **Hunter Truck Center (Body Shop)**  
174 Oneida Valley Rd. • Route 38  
Butler, PA 16001  
724-282-1456

**4** **Hunter Truck Sales & Service**  
101 East Main St. • Route 38  
Eau Claire, PA 16030 (I-80 Exit 42)  
724-791-2525

**5** **Hunter Truck Sales & Service**  
6390 Clintonville-Emlenton Rd.  
Emlenton, PA 16373 (I-80 Exit 42)  
724-867-5290

**6** **Hunter Buffalo Peterbilt**  
2370 Walden Ave.  
Buffalo, NY 14225 (I-90 Exit 52 East)  
716-684-0010

**7** **Hunter Idealease**  
350 Poplar St.  
Pittsburgh, PA 15223 (Etna)  
412-781-2800

**8** **Hunter Truck Sales & Service**  
4637 Campbell's Run Road  
Pittsburgh, PA 15205  
412-787-0600

**9** **Hunter Truck Sales & Service**  
100 Hunter's Way, Route 43  
Smithfield, PA 15478 (Uniontown)  
724-564-4292

**10** **John's Truck Parts**  
141 Huntingdon Road  
Wyano, PA 15695  
724-722-3574

**11** **Hunter Truck Sales & Service**  
1 West Alexander Road  
Valley Grove, WV 26060  
(Wheeling • I-70 Exit 11)  
304-547-2880

**12** **Hunter Keystone Peterbilt**  
160 Cresswood Drive  
I-80 Exit 120  
Clearfield, PA 16830  
814-768-7679

**13** **Hunter Keystone Peterbilt**  
9981 Old Route 22  
Breinigsville, PA 18031  
(Allentown • I-78 Exit 13)  
610-285-2244

**14** **Hunter Keystone Peterbilt**  
1463 Manheim Pike  
Lancaster, PA 17601  
717-299-6630

**15** **Hunter Pocono Peterbilt**  
1328 Golden Slipper Rd.  
Bartonsville, PA 18321  
570-688-2400

**16** **Hunter Jersey Peterbilt**  
524 Monmouth Road • P.O. Box 729  
Clarksburg, NJ 08510 (I-95, Exit 16B)  
609-259-5950

**17** **Hunter Idealease**  
9801 Bluegrass Road  
Philadelphia, PA 19114  
215-856-7601

**18** **Hunter Truck Sales & Service**  
2320 High Hill Road  
Swedesboro, NJ 08085  
856-241-8890

**19** **Hunter Jersey Peterbilt**  
454 N. Broadway  
Pennsville, NJ 08070  
856-299-5010